

# LDA series

High speed, Feed-off-the-arm, Lower feed, Double chain stitch machines



LDA-L26-1

## Variety



### LDA-L26-1

Two needle, for light weight materials



### LDA-T26-1

Two needle, for heavy weight materials



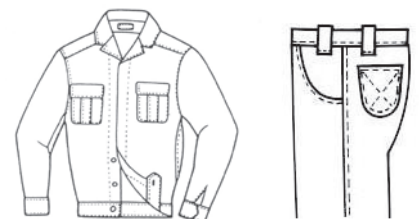
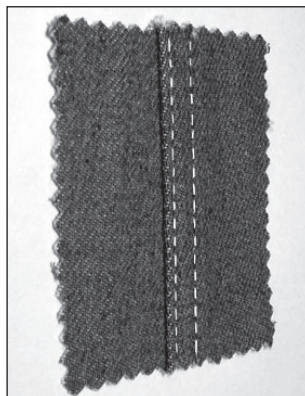
LDA-T26-1

## Applications

- For sewing light to heavy weight materials
- Suitable for sewing shirts, sleep suit, jeans, pants, skirts, uniforms, heavyoveralls, raincoats, and to sew tubular products, etc.



LDA-T26-1



## Features

- Fully automatic lubrication
- Clear, unobstructed view of work area for operator with ample work space to right of needles
- Easy access to stitch regulator and looper avoiding motion adjustment
- Oil flow window indicates oil circulation
- Non-slip belt drive to bed mechanism assures smooth, positive power feeding
- Under threading readily accessible through hinged covers

## Specifications (LDA-□)

Variety	L26-1	T26-1
Number of needle	Two needle	
Max. sewing speed	6,500 s.p.m.	5,000 s.p.m.
Max. stitch length	7/16" (2.5 mm)	11/64" (4.2 mm)
Clearance under presser foot	1/4" (6.4 mm)	5/16" (8 mm)
Needle bar stroke	1-1/16" (27 mm)	1-5/16" (33.3 mm)
Needle(standard)	TVx7 (#16), 149x7 (#100)	TVx3 (#21), 149x3 (#130)
Thread	#40 (standard)	#20 (standard)
Lubrication	Full automatic lubrication type	
Motor	Clutch motor	

NOTE: (1) Speed depends on threads, materials and type of operation  
 (2) Specifications subject to change without notice

## Needle gauge list (LDA-□)

Variety	Needle gauge size
L26-1, T26-1	standard : 3/16"(4.8mm) , 1/4"(6.4mm)



**SEIKO SEWING MACHINE CO., LTD.**

2-13-6, Sakaecho, Funabashi-shi  
 Chiba Prefecture, 273-0018, Japan

Phone : +81-47-420-3561 (Overseas dept.)

Fax : +81-47-420-3560

E-mail : export@seiko-sewing.co.jp

Printed in Japan 2019.06

<http://www.seiko-sewing.co.jp/>