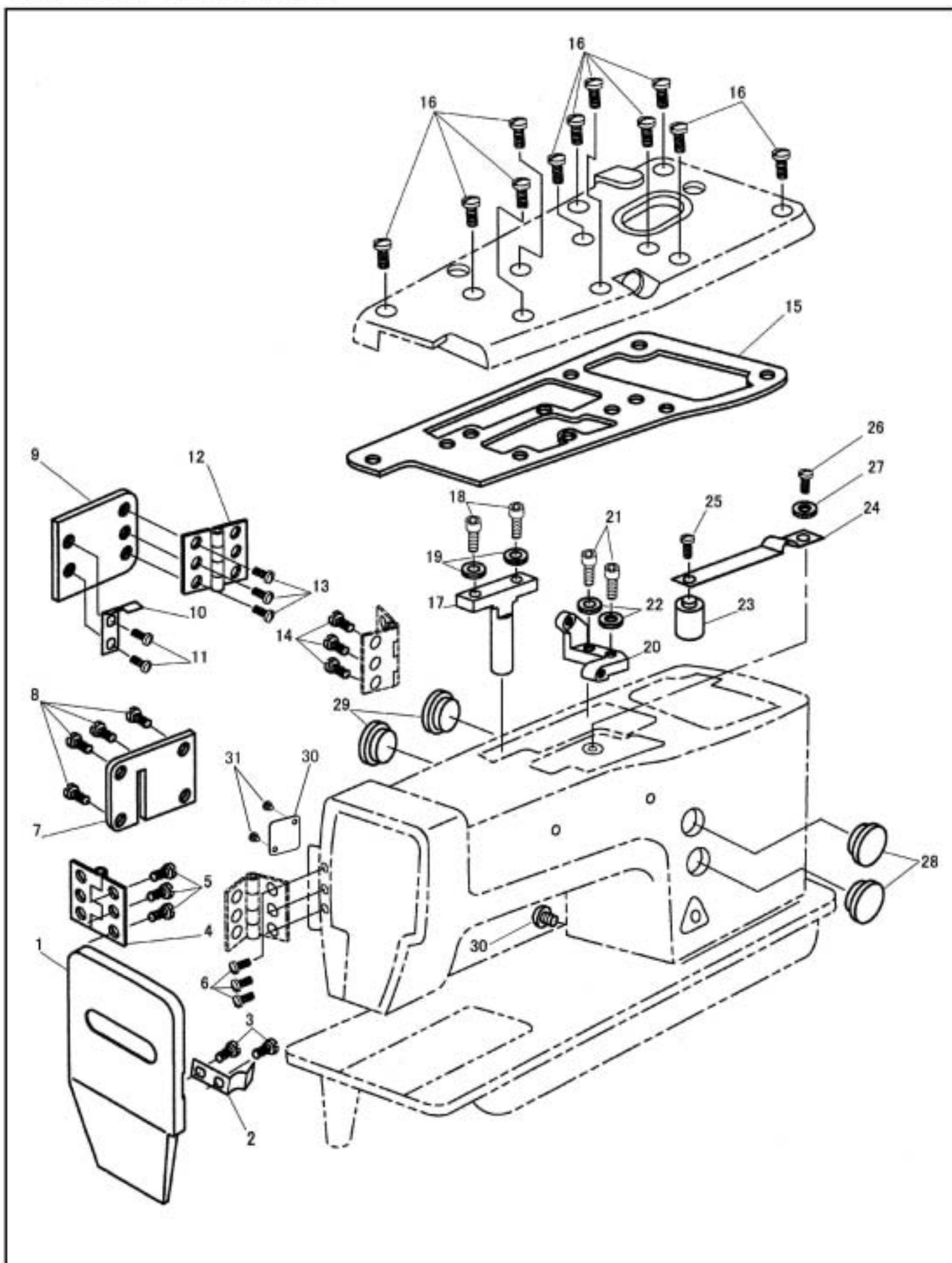


面板、裏板  
FACE PLATE, ARM COVER (REAR)



面板、裏板  
FACE PLATE, ARM COVER (REAR)

| No | 部品番号<br>PARTS No | -8BL-2<br>-8BL/TA-2 | 員数<br>QTY | 品名               | DESCRIPTION                          |
|----|------------------|---------------------|-----------|------------------|--------------------------------------|
| 1  | 40102            | *                   | 1         | 面板               | FACE PLATE                           |
| 2  | 15037            | *                   | 1         | 面板バネ             | FACE PLATE SPRING                    |
| 3  | 15039            | *                   | 2         | 面板バネ止めねじ         | SCREW 1/8X44 L=3.5                   |
| 4  | 15036            | *                   | 1         | 面板蝶番             | HINGE                                |
| 5  | 15039            | *                   | 3         | 面板蝶番止めねじ         | SCREW 1/8X44 L=3.5                   |
| 6  | 15039            | *                   | 3         | 面板止めねじ           | SCREW 1/8X44 L=3.5                   |
| 7  | 40106            | *                   | 1         | 裏板 (面板側)         | ARM COVER (REAR) (SMALL)             |
| 8  | 8040             | *                   | 4         | 裏板 (面板側) 止めねじ    | SCREW 9/64X40 L=8.0                  |
| 9  | 40105            | *                   | 1         | 裏板 (プーリ側)        | ARM COVER (REAR) (LARGE)             |
| 10 | 15037            | *                   | 1         | 裏板 (プーリ側) バネ     | ARM COVER (REAR) (LARGE) SPRING      |
| 11 | 15039            | *                   | 2         | 裏板 (プーリ側) バネ止めねじ | SCREW 1/8X44 L=3.5                   |
| 12 | 15036            | *                   | 1         | 裏板 (プーリ側) 蝶番     | HINGE                                |
| 13 | 15039            | *                   | 3         | 裏板 (プーリ側) 蝶番止めねじ | SCREW 1/8X44 L=3.5                   |
| 14 | 15039            | *                   | 3         | 裏板 (プーリ側) 止めねじ   | SCREW 1/8X44 L=3.5                   |
| 15 | 40104            | *                   | 1         | 上板シートパッキン        | GASKET                               |
| 16 | 30066            | *                   | 11        | 上板止めねじ           | SCREW M5X0.8 L=12                    |
| 17 | 40100-02         | *                   | 1         | 大板ばね調節ねじ土台       | P/B SPRING REGULATING SCREW BRACKET  |
| 18 | 18065            | *                   | 2         | 土台止めねじ           | SCREW M5X0.8 L=14                    |
| 19 | 90625            | *                   | 2         | 土台止めねじ座金         | WASHER                               |
| 20 | 25600            | *                   | 1         | 小弓土台             | KNEE LIFTER CONNECTING LEVER BRACKET |
| 21 | 18065            | *                   | 2         | 小弓土台止めねじ         | SCREW M5X0.8 L=14                    |
| 22 | 90625            | *                   | 2         | 小弓土台止めねじ座金       | WASHER                               |
| 23 | 11004            | *                   | 1         | 油調節おもり           | OIL REGULATOR                        |
| 24 | 15086            | *                   | 1         | 油調節板バネ           | OIL CONTROL SPRING                   |
| 25 | 10597            | *                   | 1         | 油調節おもり止めねじ       | SCREW 1/8X40 L=3.3                   |
| 26 | 8040             | *                   | 1         | 油調節板バネ止めねじ       | SCREW 9/64X40 L=8.0                  |
| 27 | 11142            | *                   | 1         | 油調節板バネ止めねじワッシャー  | WASHER                               |
| 28 | 40118            | *                   | 2         | アームゴム栓 (径20)     | RUBBER                               |
| 29 | 40118            | *                   | 2         | アームゴム栓 (径20)     | RUBBER                               |
| 30 | 30046            | *                   | 1         | アース線止めねじ         | EARTH WIRE SCREW M4X0.7 L=4          |
| 31 | 40266            | *                   | 1         | アーム裏カバー          | ARM SIDE COVER (REAR)                |
| 32 | 37509            | *                   | 2         | アーム裏カバー止めねじ      | SCREW M5X0.8 L=6.0                   |