

BSC series

Single needle, High speed, Narrow cylinder bed, Horizontal axis hook, Compound feed and walking foot, Reverse stitch, Lockstitch machines



BSC-8BL-BTFL-CD-DS

Variety



BSC-8B

Standard hook.



BSC-8B-BTFL

Standard hook, automatic back tack, automatic presser foot lift.



BSC-8B-BTFL-CD-DS

Standard hook, automatic back tack, automatic presser foot lift, climbing device, dual stitching device.



BSC-8BV

Standard hook, horizontal feed, synchronized binder.



BSC-8BV-BTFL

Standard hook, horizontal feed, synchronized binder, automatic back tack, automatic presser foot lift.



BSC-8BHC-BTFL

Standard hook, horizontal feed, thread trimmer, automatic back tack, automatic presser foot lift.



BSC-8BL

Large hook.



BSC-8BL-BTFL

Large hook, automatic back tack, automatic presser foot lift.



BSC-8BL-BTFL-CD-DS

Large hook, automatic back tack, automatic presser foot lift, climbing device, dual stitching device.



BSC-8BLV

Large hook, horizontal feed, synchronized binder.



BSC-8BLV-BTFL

Large hook, horizontal feed, synchronized binder, automatic back tack, automatic presser foot lift.



BSC-8BLH

Large hook, horizontal feed.

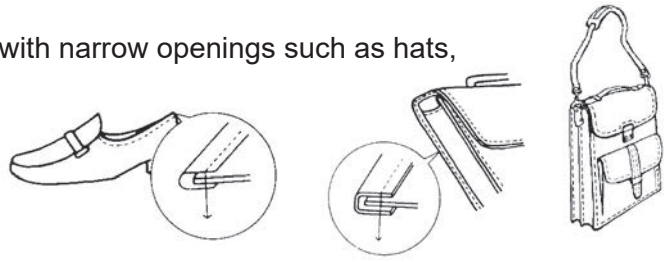


BSC-8BLH-BTFL

Large hook, horizontal feed, automatic back tack, automatic presser foot.

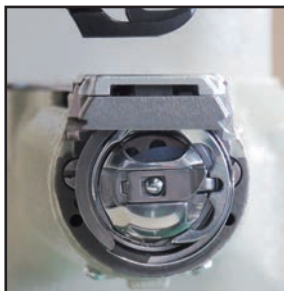
Applications

- For sewing medium to heavy weight fabrics, leather, vinyl, synthetics and laminated and coated materials.
- Suitable for tubular and curved products with narrow openings such as hats, caps, shoes, bags, handbags, etc.

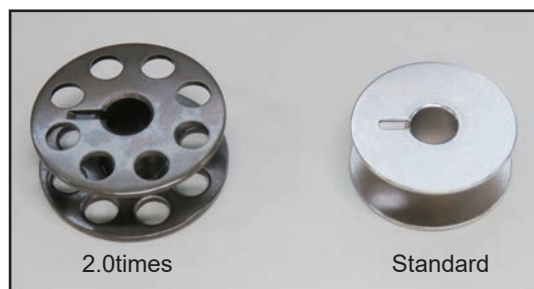


Features

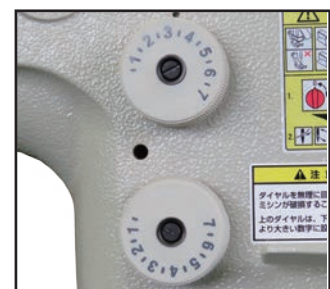
- Secure Feeding
 - * Compound Feeding System to make the secure stitches on heavy duty materials, even on slippery or uneven materials.
- Cylinder bed size
 - * 1-13/16"(46mm) dia. for standard hook model(**8B**, **8BV**, **8BHC**).
 - * 1-31/32"(50mm) dia. for large hook model(**8BL**, **8BLV**, **8BLH**).
 - Double size rotating hook reducing a frequency of bobbin thread replacement.
- One touch switchover for two different stitch lengths (**DS** device)
 - * Variety sewing materials such as steps, curves, uneven thickness can be performed by one touch switchover setting two different stitch lengths. The efficient work and beautiful finishes will be obtained.
 - (**8B-BTFL-CD-DS**, **8BL-BTFL-CD-DS**)



2.0 times large capacity hook



Comparison of the bobbin size

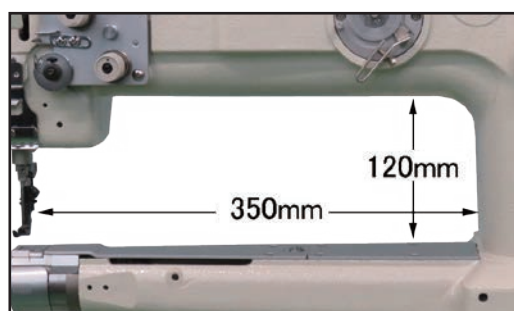


One touch switchover for two different stitch lengths (**DS** device)

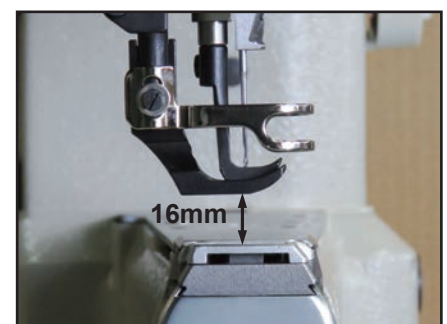
- Built-in bobbin winder
 - * Built-in bobbin winder makes it possible to wind the bobbin thread during sewing operation.
- Wide working space
 - * Wide working space 13-25/32" x 4-23/32"(350mm x 120mm).
- Good Operability
 - * Presser foot lift amount 5/8"(16mm). (by knee)
 - Needle bar stroke 1-29/64"(37mm).
 - Alternating presser foot lift amount 3/64" - 1/4" (1mm - 6.5mm).



Built-in bobbin winder with fine adjustment function of thread winding amount

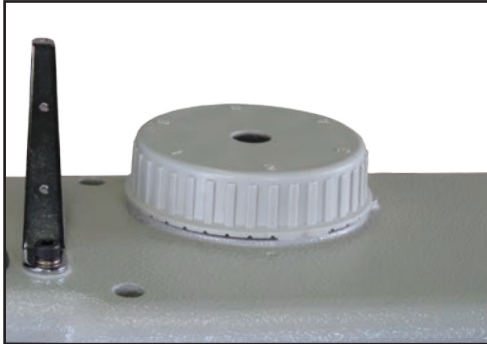


Wide working space

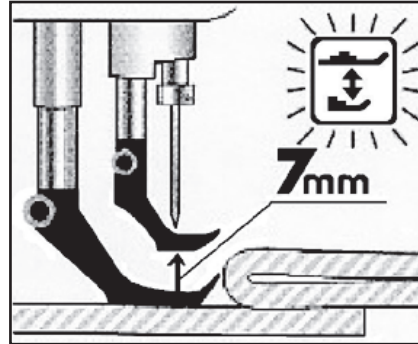


The clearance under the presser foot (16mm)

- Simple setting for alternating presser foot movement
 - * Alternating presser foot movement between inner foot and outer foot can be changed simply by the easy-to-handle dial located at the top of the sewing machine.
 - * Once the alternating movements have been set, the sewing speed is automatically controlled to the optimum speed so that stable sewing is maintained. (**8B-BTFL-CD-DS**, **8BL-BTFL-CD-DS**)
- Smooth stitching on step section (**CD** device)
 - * Can change the presser foot step maximum 7mm higher by button right before the uneven point that makes smoother stitching. (**8B-BTFL-CD-DS**, **8BL-BTFL-CD-DS**)
- 5 operational switches improve working efficiency
 - * 5 switch buttons are panelled on the convenient positions improve the efficient works. (**8B-BTFL-CD-DS**, **8BL-BTFL-CD-DS**)



Simple setting for alternating presser foot movement



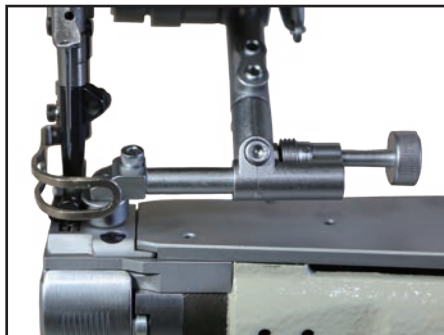
Smooth stitching on step section (**CD** device)



5 operational switches

- * Quick reverse switch
- * Walking foot movement change switch
- * Auto backtack select switch
- * Half stitch switch
- * Stitch length change switch

- Guide (optional parts)



- Lubrication
 - * Automatic lubrication system.
- Improved Safety
 - * Moving area is safely covered.
- Improved Maintainability
 - * Better maintainability with Thumb screw to adjust presser foot pressure.
- Automatic thread trimmer
 - * Automatic thread trimmer model available. (**8BHC**)
- Synchronized binder
 - * Synchronized binder models available. (**8BV**, **8BLV**)

Specifications (BSC-□)

Variety	8B 8B-BTFL 8B-BTFL-CD-DS	8BL 8BL-BTFL 8BL-BTFL-CD-DS	8BV 8BV-BTFL	8BLV 8BLV-BTFL	8BLH 8BLH-BTFL	8BHC-BTFL
Number of needle	Single needle					
Max. sewing speed	2,300 s.p.m.					
Max. stitch length	9/32" (7 mm)					
Needle bar stroke	1-29/64" (37 mm)					
Needle(standard)	DPx17 (#18) 135x17 (#110)		DPx17 (#16) 135x17 (#100)			DPx17 (#18) 135x17 (#110)
Thread	#20 (standard)		#30 (standard)			#20 (standard)
Thread take up lever	Slide type					
Lubrication	Automatic lubrication type					
Working space	13-25/32"x 4-23/32" (350 x 120 mm)					
Net weight(Head only)	48 Kg ^{*1}					52 Kg ^{*1}

Feeding system	elliptical	horizontal
----------------	------------	------------

*1 Additional weight for BTFL equipment is 1 kg

● Clearance under presser foot and Amount of lift of walking foot

Variety	8B / 8BL 8BV / 8BLV 8BLH	8B-BTFL / 8BL-BTFL 8BV-BTFL / 8BLV-BTFL 8BHC-BTFL / 8BLH-BTFL	8B-BTFL-CD-DS 8BL-BTFL-CD-DS
Clearance under presser foot	by hand	23/64" (9 mm)	
	by knee	5/8" (16 mm)	
	by automatic foot lifter	—	5/8" (16 mm)
Amount of lift of walking foot	3/64"-1/4" (1 - 6.5 mm)		3/64"-9/32" (1 - 7 mm)

● Hook and Cylinder size and Bobbin size

Variety	8B / 8BV / 8BHC-BTFL 8B-BTFL / 8BV-BTFL 8B-BTFL-CD-DS	8BL / 8BLV / 8BLH 8BL-BTFL / 8BLV-BTFL / 8BLH-BTFL 8BL-BTFL-CD-DS
Hook	Horizontal axis hook	Large horizontal axis hook(2.0times)
Cylinder size	1-13/16"(46 mm) dia.	1-13/32"(50 mm) dia.
Bobbin size	Φ 55/64" (Φ 22 mm), t=15/32"(12mm)	Φ 1-7/64" (Φ 28 mm), t=15/32"(12mm)

NOTE: (1) Speed depends on threads, materials and type of operation
(2) Specifications subject to change without notice



SEIKO SEWING MACHINE CO., LTD.

2-13-6, Sakaecho, Funabashi-shi
Chiba Prefecture, 273-0018, Japan

Phone : +81-47-420-3561 (Overseas dept.)

Fax : +81-47-420-3560

E-mail : exsales@seiko-sewing.co.jp

Printed in Japan 2024. 10

<https://www.seiko-sewing.co.jp/en/>