

SEIKO

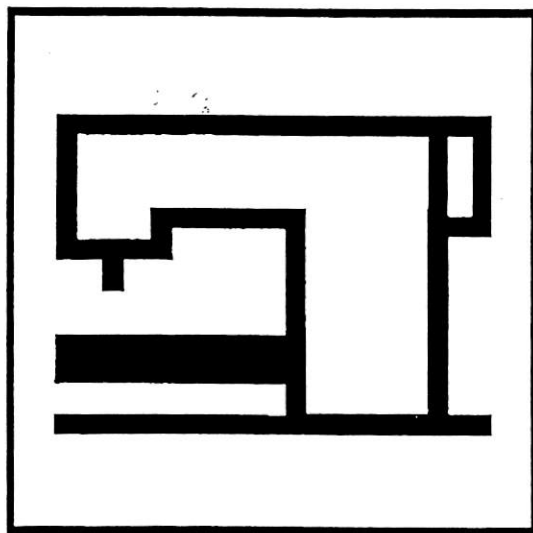
PARTS LIST

CW-1, CW-7B

CW-8BV

LCW-8B

LCW-8BV

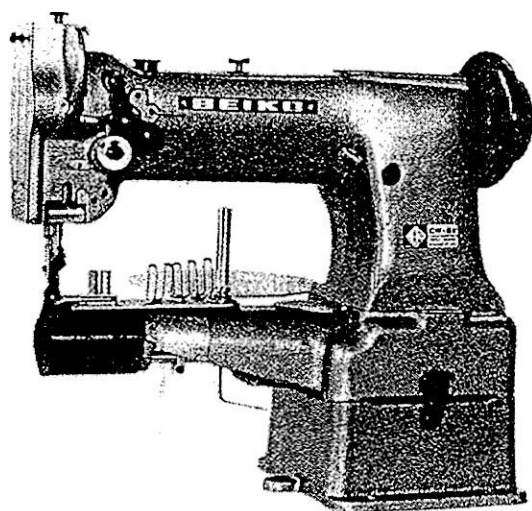


SEIKO SEWING MACHINE CO., LTD.

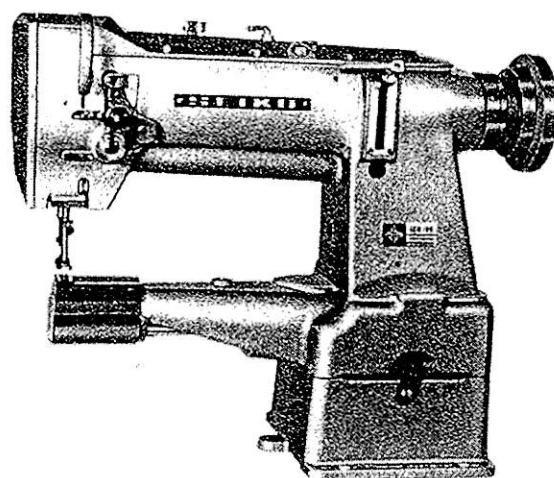
INDEX

Page

Thread take up lever, needle bar for all models	1
天秤・針棒関係	
Arm shaft, feeding mechanism for CW.LCW-7, 8 & 8V	2
CW・LCW-7, 8 & 8V 上軸・送り機構関係	
Lifting lever, face plate, slide plate for all models	3
弓、面板、差し板、ベース関係	
Presser bar, lifting rock shaft, vibrating presser foot for CW.LCW-8, 8B, 8V & 8BV . . .	4
CW・LCW-8, 8B, 8V, & 8BV 押え棒・横軸・中押え関係	
Hook driving shaft, rotating hook, timing belt for all models	5
下軸、カム関係	
Thread tension, feed driving rock shaft, feeder, needle plate for all models	6
糸掛、糸調子、送り竿関係	
Accessories	7
附属関係	
Reverse stitch mechanism for CW.LCW-7B, 8B & 8BV	8
CW・LCW-7B・8B&8BV バック関係	
Special parts for CW.LCW-8V & 8BV	9
CW・LCW-8V&8BV 専用部品	
Presser bar, needle bar, needle plate, feeder for CW.LCW-7 & 7B	10
CW・LCW-7 & 7B 針棒・押え棒関係	
Special parts for LCW	11
LCW 専用部品	
Special parts for CW-1	12
CW-1 専用部品	
Belt guard	13
ベルトガード	
Special parts for LCW-6F	14
LCW-6F 専用部品	
Feed mechanism for LCW-8B	15
LCW-8B 送り関係	

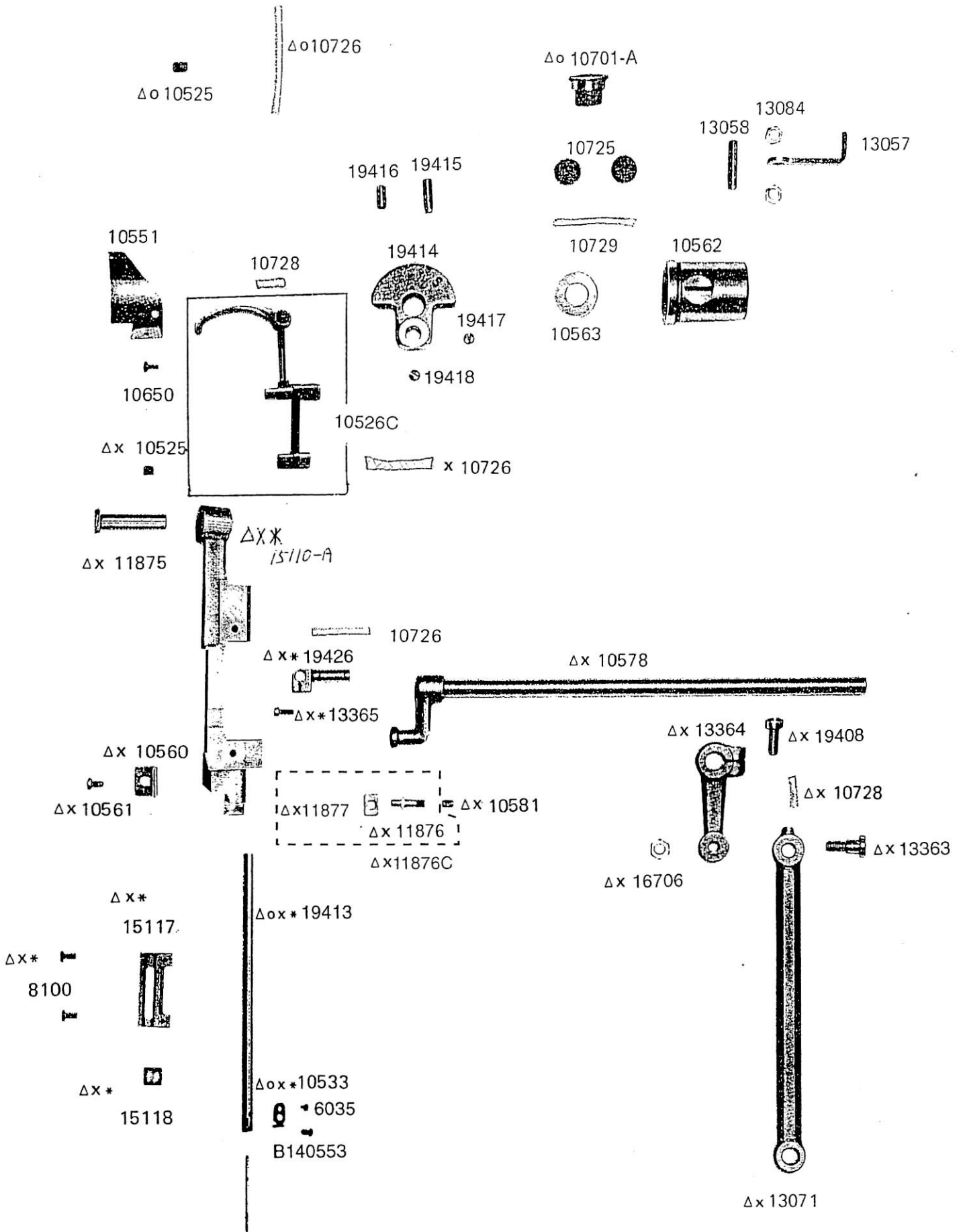


Model CW-8V



Model LCW-8B

THREAD TAKE UP LEVER, NEEDLE BAR, ETC. FOR
ALL MODELS EXCEPT PARTS MARKED * . O . X . Δ

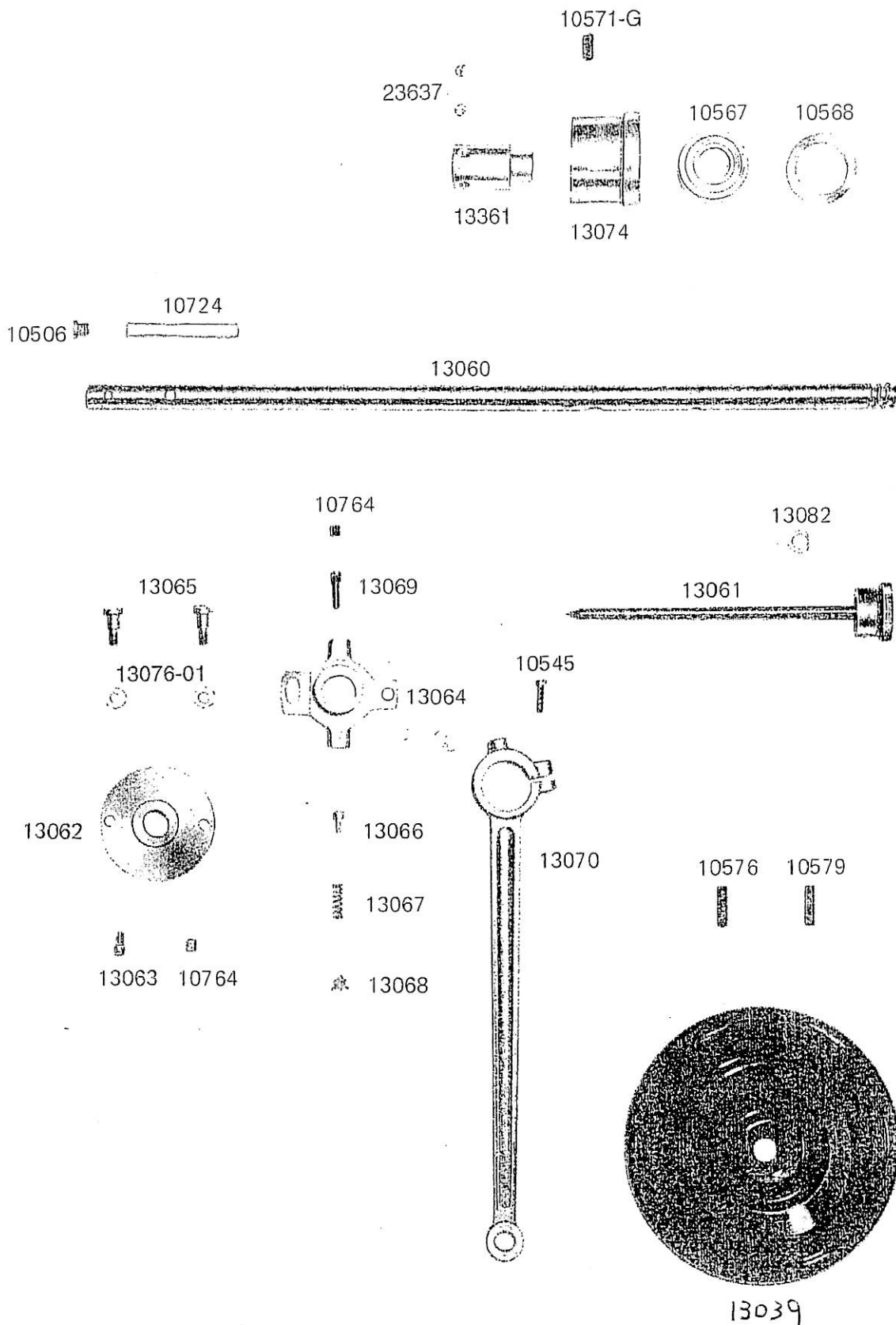


Parts marked * are not necessary for CW-7 & 7B
 Parts marked O are not necessary for LCW
 Parts marked X are not necessary for CW-1
 Parts marked Δ are not necessary for LCW-6F

(*印は CW-7, CW-7B には不要)
 (O印は LCW タイプには不要)
 (X印は CW-1 には不要)
 (Δ印は LCW-6F には不要)

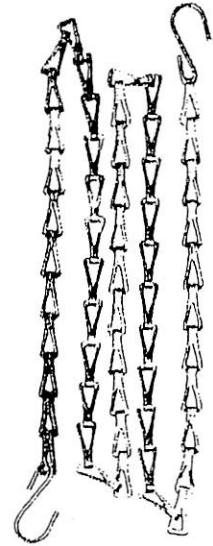
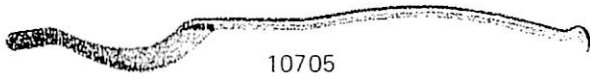
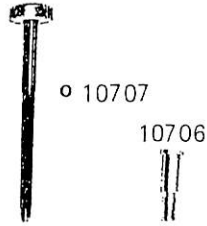
ARM SHAFT, FEEDING MECHANISM

FOR CW · LCW - 7, 8 & 8V



LIFTING LEVER, FACE PLATE, SLIDE PLATE FOR ALL MODELS EXCEPT PARTS MARKED O.X.*

T 10712



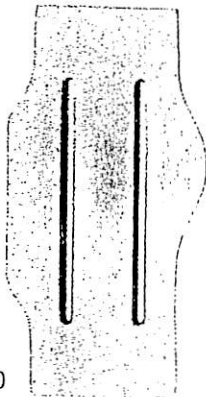
13079

o 10699

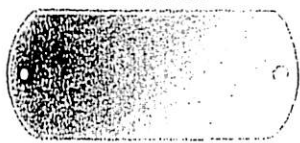


T o 10704

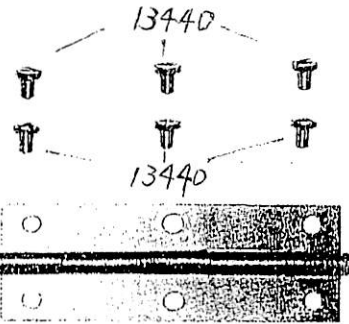
o 10703



xo 10702



xo 10698



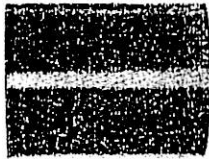
13436

o 10700

13027



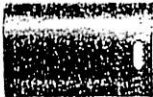
x13009



13026



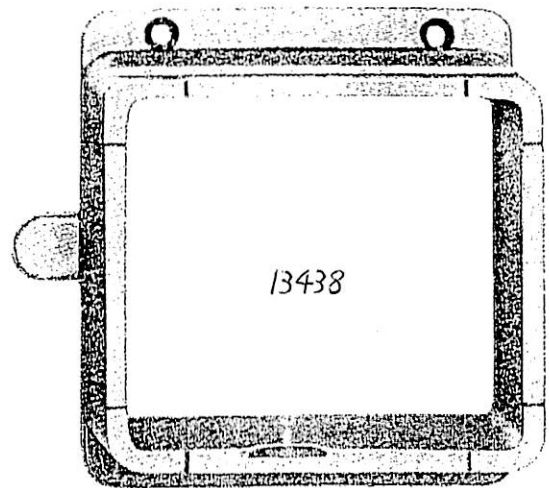
13024



13025

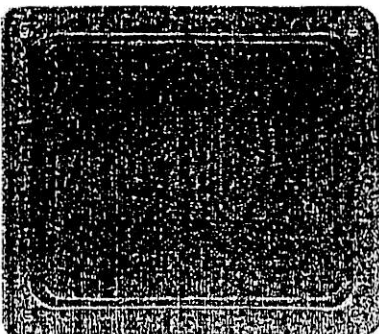


13027



13438

13089



19403

13006

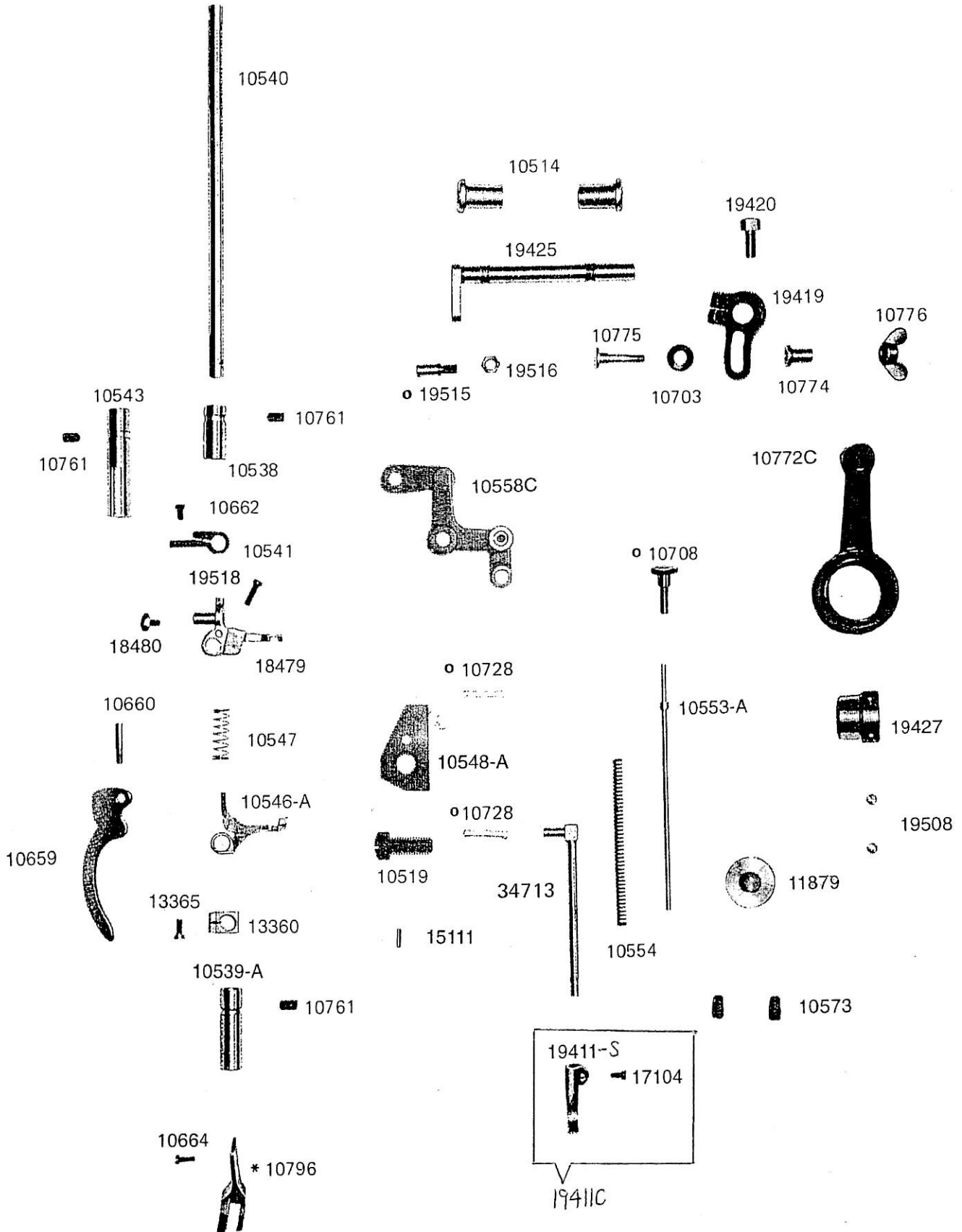


13388-A

13008

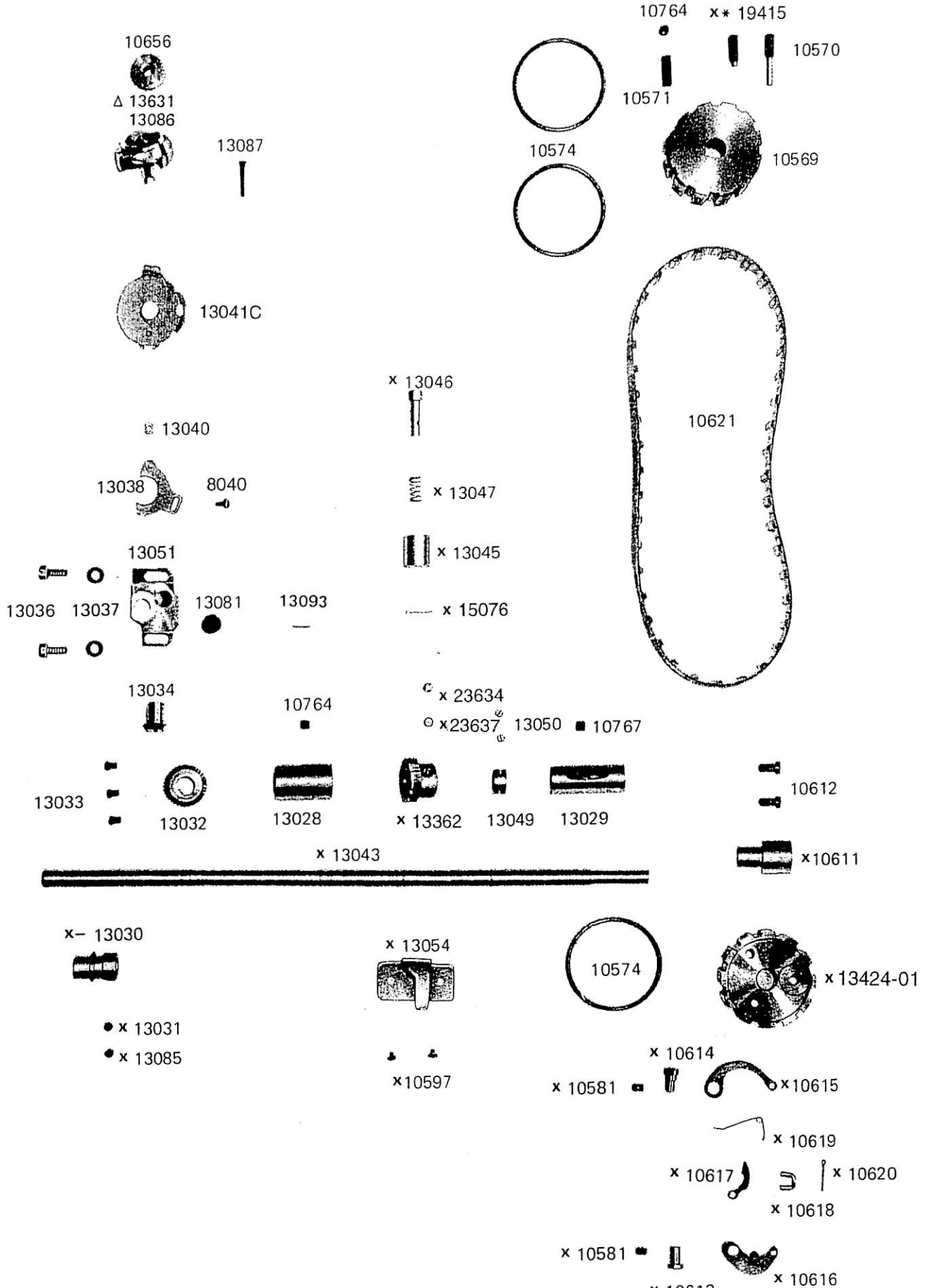
Parts marked * are not necessary for CW.LCW-8V & 8BV (*印は CW.LCW-8V & 8BV には不要)
 Parts marked o are not necessary for LCW (o印は LCW には不要)
 Parts marked X are not necessary for CW-1 (X印は CW-1 には不要)

CW · LCW- 8, 8B, 8V, & 8BV 押え棒・横軸・中押え関係
 PRESSER BAR, LIFTING ROCK SHAFT, VIBRATING PRESSER
 FOR CW · LCW - 8, 8B, 8V & 8BV



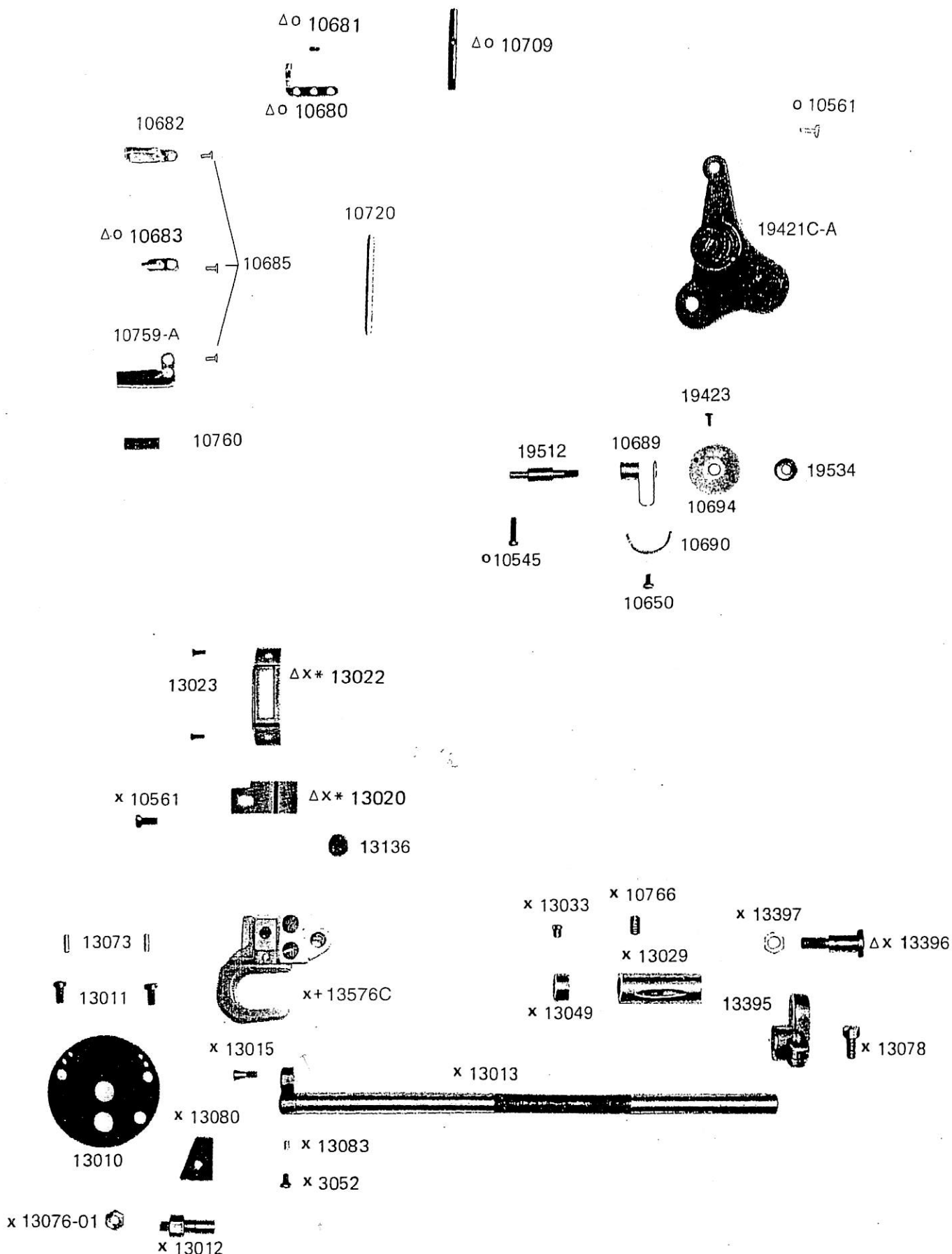
Parts marked * are not necessary for CW · LCW-8V & 8BV (*印は CW-8V, CW-8BV, LCW-8V, LCW-8BV には不要)
 Parts marked ○ are not necessary for LCW (○印は LCW には不要)

HOOK DRIVING SHAFT, ROTATING HOOK, TIMING BELT FOR ALL MODELS EXCEPT PARTS MARKED * . + . - . x . Δ



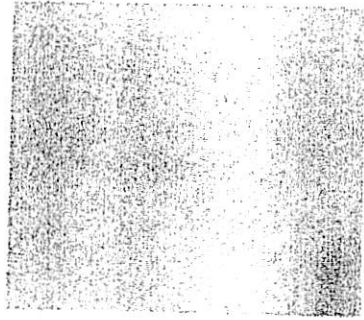
Part marked * is not necessary for CW . LCW-7B . 8B & 8BV (*印は CW・LCW-7B、8B&8BV には不要)
 Part marked + is for only CW . LCW-7B . 8B & 8BV (+印は CW・LCW-7B、8B&8BV にのみ)
 Part marked - is not necessary for CW . LCW-8V & 8BV (-印は CW・LCW-8V&8BV には不要)
 Parts marked X are not necessary for CW-1 (X印は CW-1 には不要)
 Parts marked Δ is for only LCW-6F (Δ印は LCW-6F のみ)

THREAD TENSION, FEED DRIVING ROCK SHAFT, FEEDER, NEEDLE
PLATE FOR ALL MODELS EXCEPT PARTS MARKED *.+.o.x.Δ

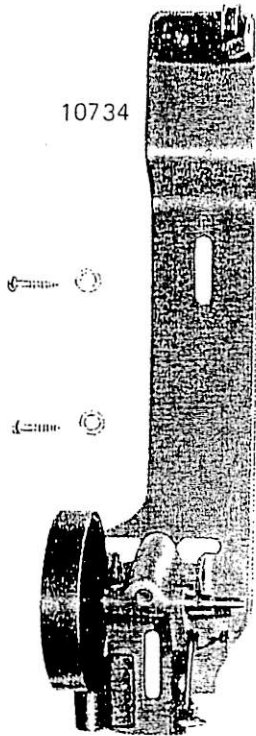


Parts marked * are not necessary for CW . LCW-7 . 7B . 8V & 8BV (*印は CW-LCW-7 . 7B . 8V & 8BV には不要)
 Parts marked + are not necessary for CW . LCW-8V & 8BV (+印は CW-LCW-8V & 8BV には不要)
 Parts marked o are not necessary for LCW (o印は LCW には不要)
 Parts marked X are not necessary for CW-1 (X印は CW-1 には不要)
 Parts marked Δ are not necessary for LCW-6F (Δ印は LCW-6F には不要)

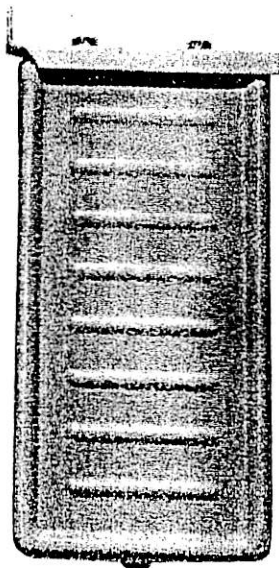
ACCESSORIES FOR ALL MODELS



8132A



10734



13098



19473



8123
O 11193



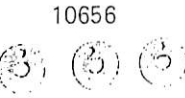
8125



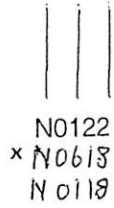
8118



8120



10656



N0122
* N0618
N 0118



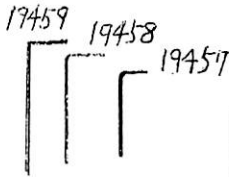
8121



50285



10748



19459 19458 19457



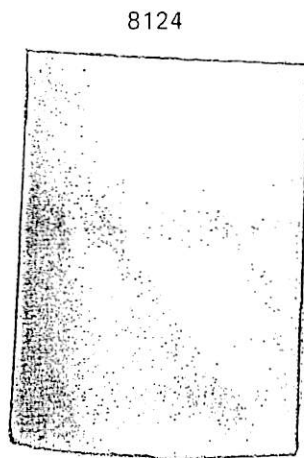
35254



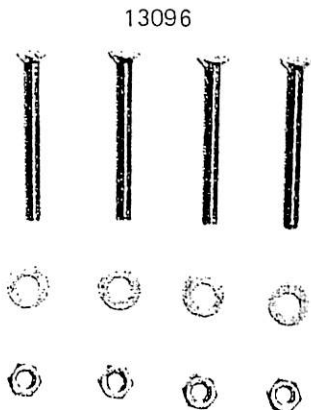
10709



X 10942



8124



13096

Part marked X is used for only CW-1

Part marked O is used for only LCW

Part marked * is used for only CW, LCW-7B, 8B & 8BV

(X印は CW-1のみ)

(O印は LCWのみ)

(*印は CW, LCW-7B, 8B&8BVのみ)