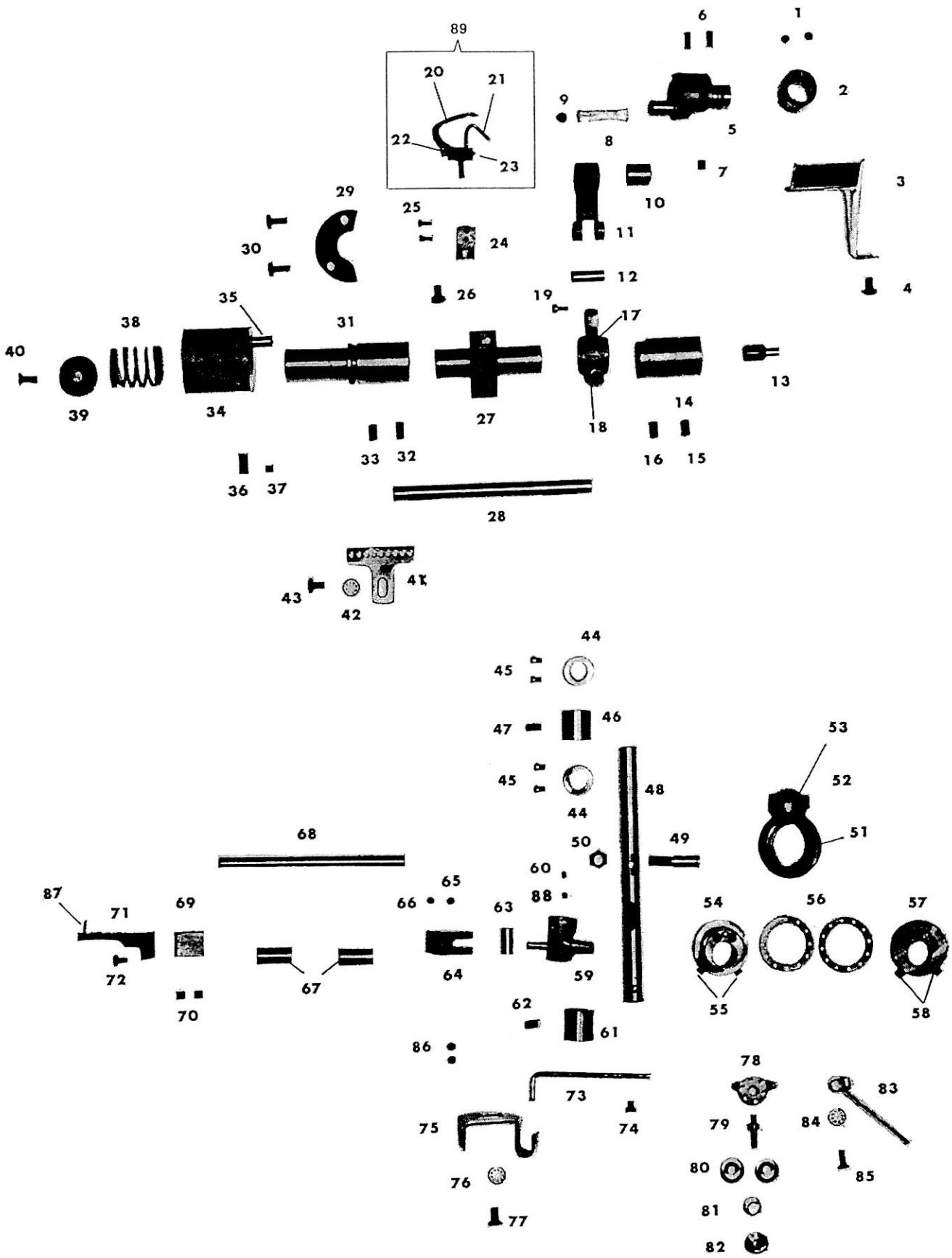


LOOPER, SPREADER group

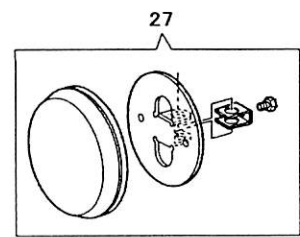
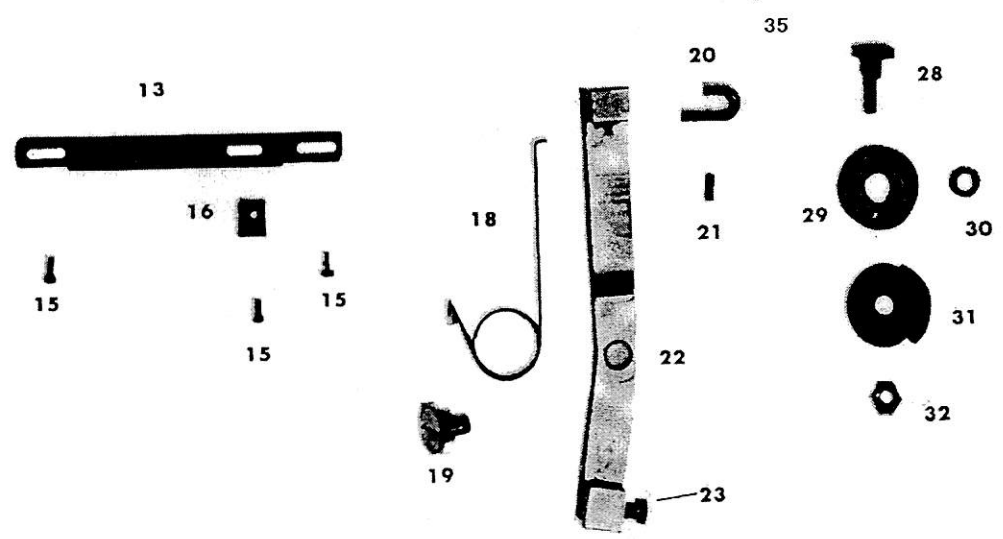
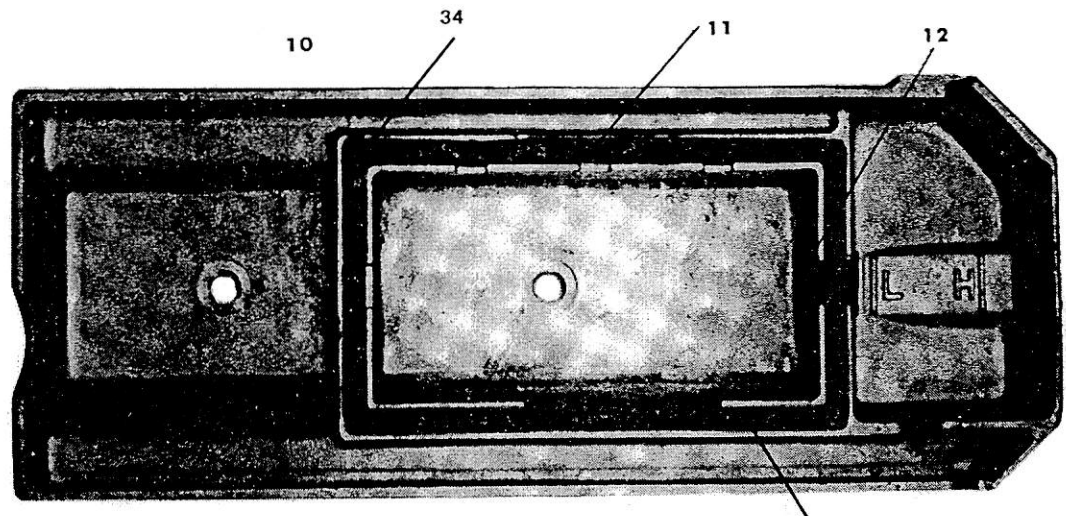
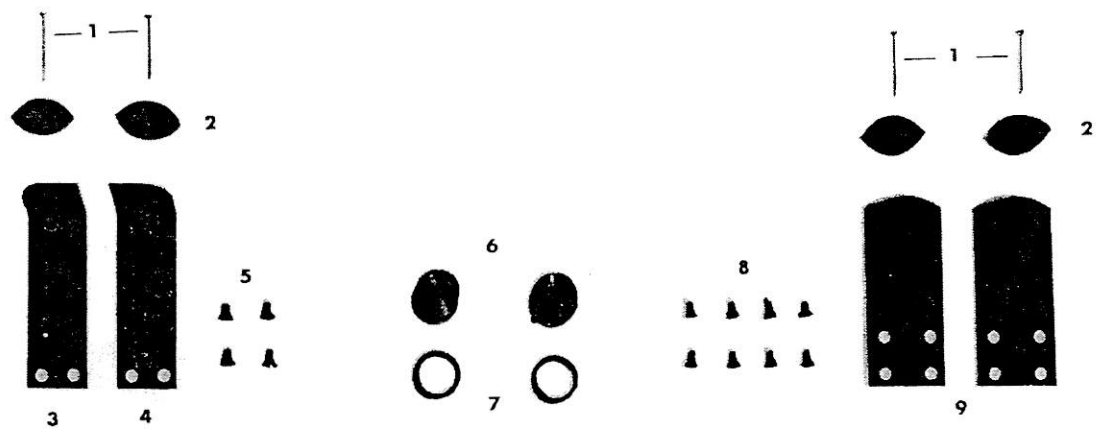
Fig. No.	Parts No.	Quantity	Name
1	13085	2	Set screw for feed lifting eccentric
1	20286	1	Feed lifting eccentric
3	20323	1	Oil guard for looper driving crank
4	12418	1	Screw for #20323
5	20313	1	Looper driving crank
6	20314	2	Looper driving crank position screw
7	10639	1	Set screw for #20313
8	10726	1	Oil wick
9	11068	1	Looper driving crank oil stopper
10	20316-A	1	Looper carrier needle bearing
11	20315	1	Looper driving connection
12	20317	1	Looper carrier crank hinge pin
13	20420	1	Vinyl suppling tube connector
14	20310	1	Looper carrier shaft bushing (right)
15	23837	1	Set screw for #20310 (B)
16	10639	1	Set screw for #20310 (A)
17	20318	1	Looper carrier crank (B)
18	10754	1	Set screw for #20318 (large)
19	6604	1	Set screw for #20318 (small)
20	† 20301	1	Looper
21	† 20303	1	Needle guard
22	† 20304	1	Screw for #20303
23	† 20305	1	Set screw for #20303
24	* 20307	1	Looper holder
25	† 20302	2	Looper set screw
26	20306	1	Looper holder screw
27	20308	1	Looper carrier
28	20309	1	Looper carrier shaft
29	20312	1	Looper carrier shaft bushing position plate (left)
30	8089	2	Set screw for #20312
31	20311	1	Looper carrier shaft bushing (left)
32	10766	1	Set screw for #20311 (B)
33	10639	1	Set screw for #20311 (A)
34	20325	1	Looper throw-out rock rod lever
35	20327	1	Looper throw-out gear locking pin
36	20326	1	Looper throw-out rock rod lever deflection protector pin
37	50230	1	Set screw for #20326
38	20329	1	Coil spring for #20325
39	20328	1	Supporting plate for #20329
40	13330-4	1	Set screw for #20328
41	20228	1	Looper thread guide
42	16287	1	Washer for #20228
43	12418	1	Set screw for #20228
44	20254	2	Spreader driving rock shaft collar
45	13033	4	Set screw for #20254
46	20252	1	Spreader driving rock shaft bushing (A)
47	10766	1	Set screw for #20252
48	20349	1	Spreader driving rock shaft
49	20352	1	Spreader driving rock shaft screw stud
50	8105	1	Lock nut for #20352
51	20355	1	Spreader driving connection needle bearing
52	20354	1	Spreader driving connection with screw
53	20353	1	Spreader driving connection ball bearing
54	20240	1	Spreader driving eccentric
55	10581	2	Set screw for #20240
56	20243	2	Spreader driving eccentric thrust washer
57	20242	1	Spreader driving eccentric counterbalance
58	10581	2	Screw for #20242
59	20356	1	Spreader driving crank
60	11953	1	Screw for #20356
61	20350	1	Spreader driving rock shaft bushing (B)
62	10766	1	Set screw for #20350
63	20348	1	Spreader driving pin
64	20347	1	Spreader driving
65	2067	1	Set screw for #20347 (long)
66	8042	1	Set screw for #20347 (short)
67	20346	2	Spreader bar bushing
68	20345	1	Spreader bar
69	20344	1	Spreader holder
70	11176	2	Screw for #20344
71	* 20341	1	Spreader
72	10561	1	Set screw for #20341
73	20351	1	Looper thread take-up rod
74	12740	1	Screw for #20351
75	20227	1	Looper thread guide (large)
76	16287	1	Looper thread guide washer (large)
77	12418	1	Set screw for #20227
78	† 38014	1	Looper thread tension thread guide
79	† 20223	1	Looper thread tension stud
80	† 20224	2	Looper thread tension disc
81	† 20226-02	1	Looper thread tension spring
82	† 20225	1	Looper thread tension thumb nut
83	20221	1	Looper thread guide (lower)
84	20222	1	Washer for #20221
85	6025	1	Set screw for #20221
86	13085	2	Screw
87	† 20343	1	Spreader point
88	20837	1	Screw
89	20301C	1	Looper complete

Remarks : Parts marked * are used for only LD-7 & 8 and different parts numbers are used



OIL TANK, KNEE LIFTER group

Fig. No.	Part No.	Quantity	Name
1	6055	4	Nail for #20387, #20388 & #20389
2	11887	4	Rubber cushion for bed
3	20388	1	Oil tank supporting clasp (B)
4	20389	1	Oil tank supporting clasp (C)
5	4139	4	Set screw for #20388 & #20389
6	20384	2	Oil tank drain plug screw
7	20385	2	Packing for #20384
8	4139	8	Set screw for #20387
9	20387	2	Oil tank supporting clasp (A)
10	20386	1	Oil tank
11	20390-01	1	Oil tank gasket
12	20391	1	Oil filter
13	20369	1	Guide plate for knee lifter lever
14			
15	10559	3	Set screw for #20369 & #20377
16	20377	1	Knee lifter lever stopper
17			
18	20370	1	Knee lifter lever spring
19	20367	1	Screw for #20366
20	20371	1	Knee lifter lifting trigger
21	4011	1	Set screw for #20371
22	20366	1	Knee lifter lever
23	37313	1	Set screw for #20368
24	20368	1	Knee lifter rod
25			
26			
27	37318C	1	Knee lifter pad
28	20375	1	Set screw for #20372
29	20372	1	Pully for #20188
30	20373	1	Collar for #20372
31	20374	1	Pulley cover
32	20376	1	Nut for #20375
33	20188	1	Knee lifter pull wire
34	20390-02	1	Oil Tank Gasket
35	20390-03	1	Oil Tank Gasket



ACCESSORIES

Fig. No.	Parts No.	Quantity	Name
1	6055	4	Nail
2	11886	2	Bed hinge connection base (rubber)
3	11170	4	Set screw
4	11169-A	2	Bed hinge connection
5	20332	1	Wrench 2.4mm
6	20333	1	Wrench 1.27mm
7	19462	1	Double head wrench
8	11196	1	Tweezers
9	25649C	1	Screw driver complete
12	8132-A	1	Accessories pack
13	N0522	3	Needle (DV x 59 #22)
14	8124	1	Machine cover
15	11193	1	Oil (large)
16	35254	1	Thread unwinder comp.
17	8125	1	Oiler
18	19457	1	Wrench 2.5mm
19	6052	4	Wood screw
20	11171	2	Bed hinge connection base
21	11169-B	2	Bed hinge connection
22	19458	1	Wrench 3.0mm

SPECIAL PARTS FOR MODELS LD-7, 27, 37, 47

Fig. No.	Parts No.	Quantity	Name
1	21100	1	Needle bar rock frame
2	21101	1	Arm shaft oil packing
3	* 21191	1	Presser foot
4	21104	1	Presser foot set screw
5	* 21108	1	Throat plate
6	* 21109	1	Feed dog
7	20505	1	Loop deflector
8	20506	2	Loop deflector set screw

Remarks: Parts marked * are used for LD-7 and another models differ by number of needle.

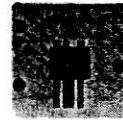


2



4

5



6

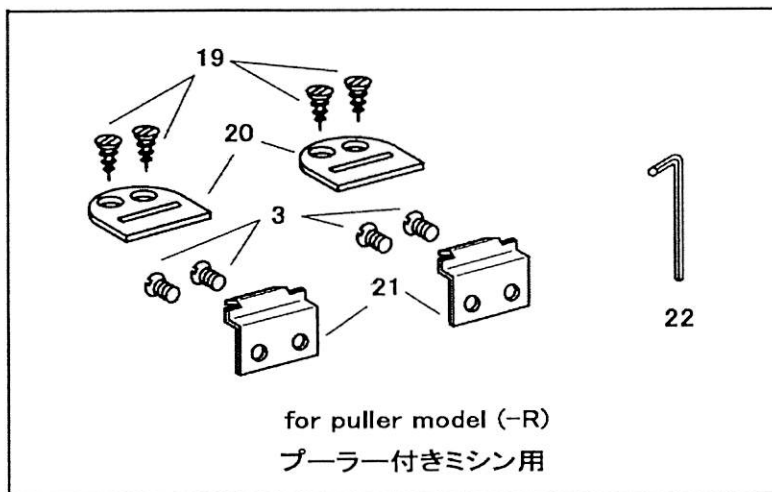
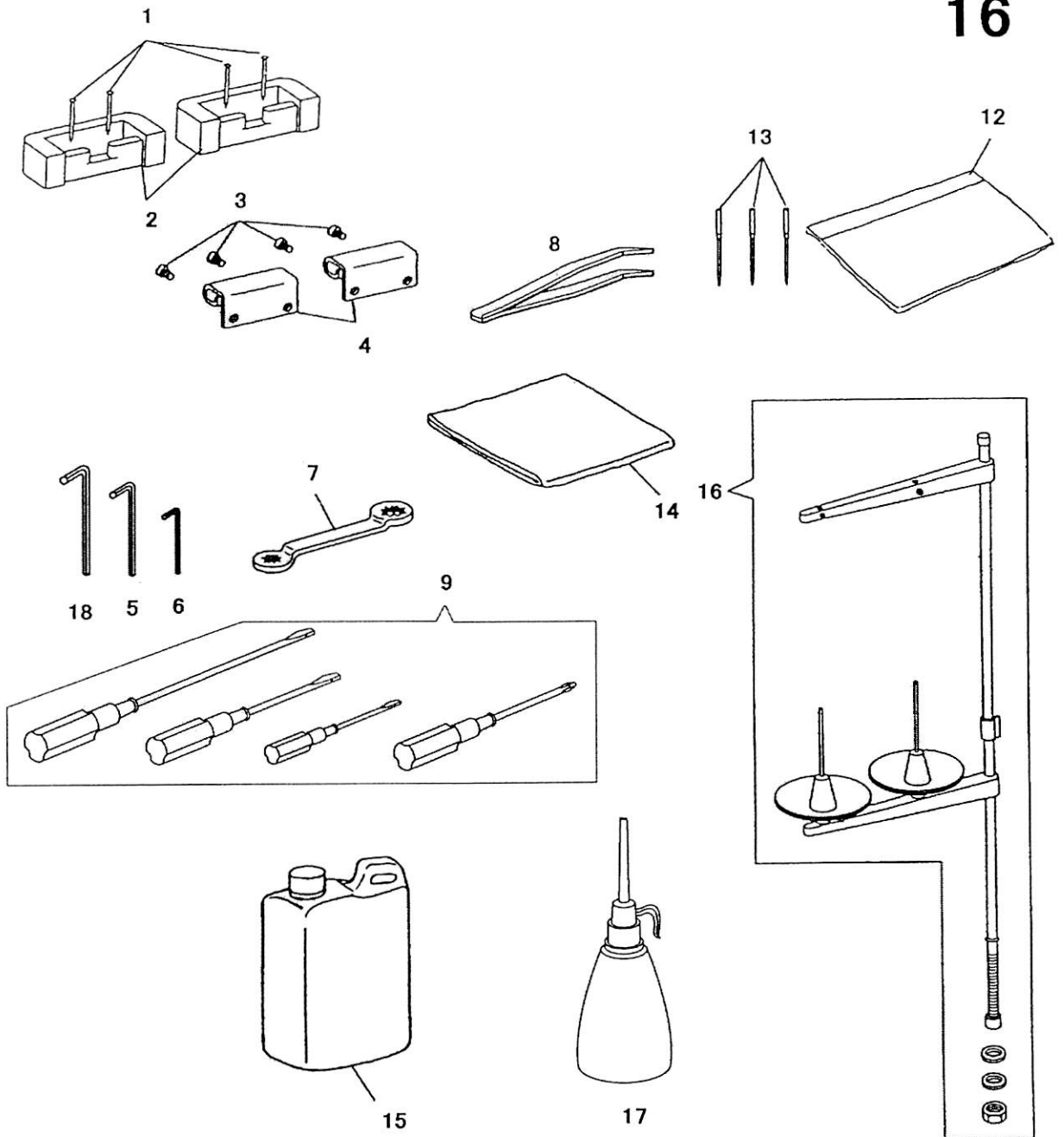


7

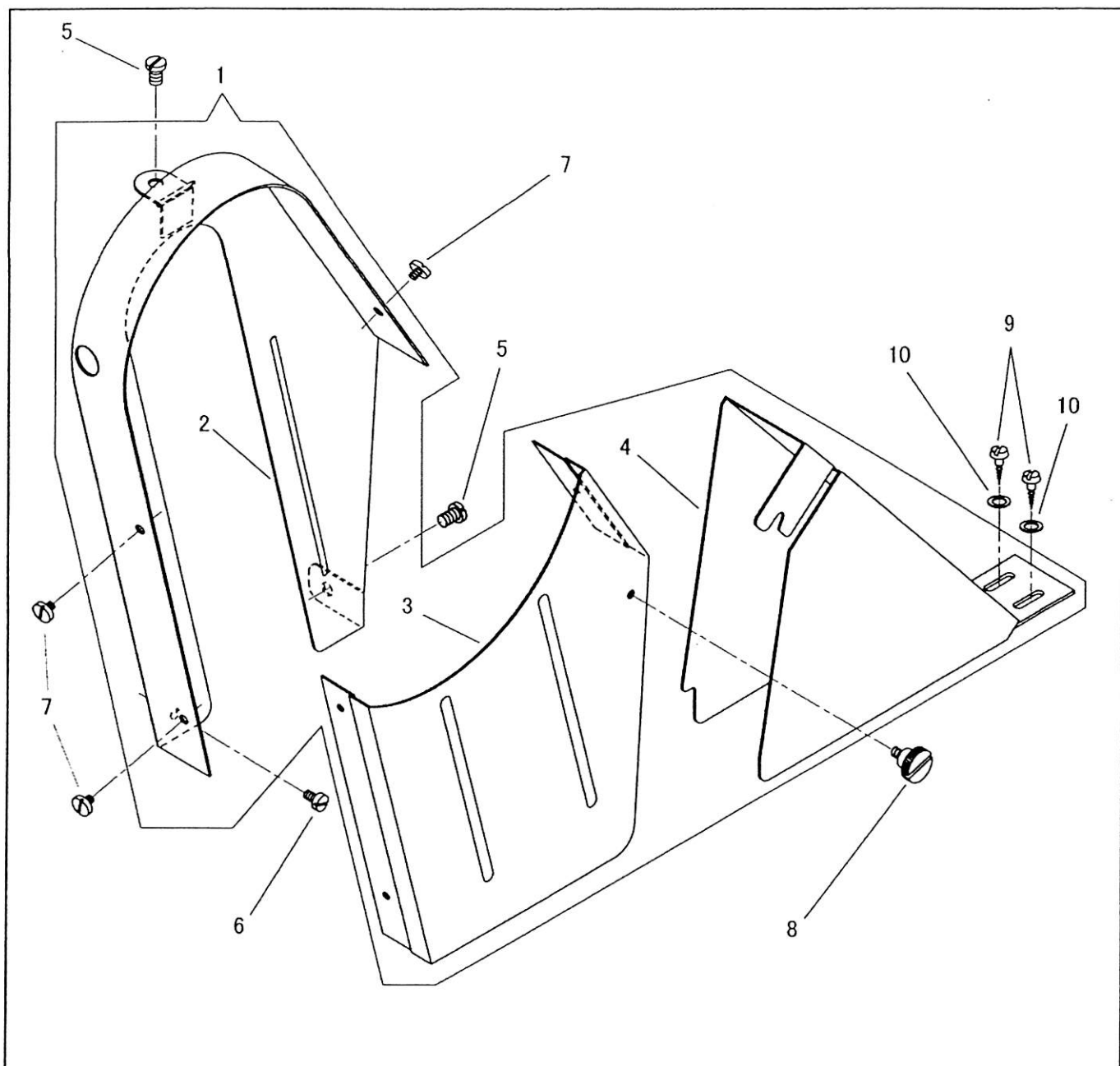


8



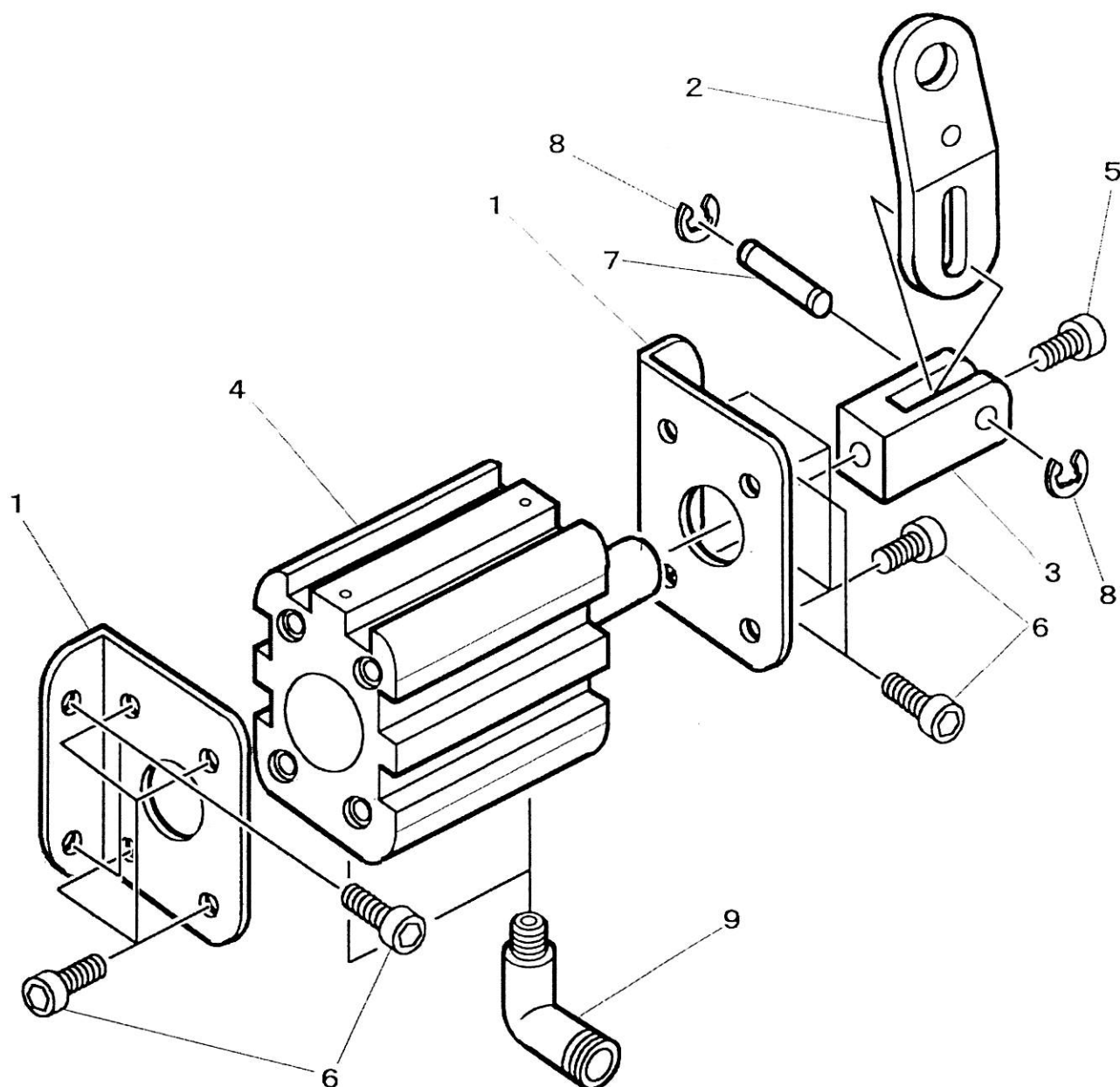


* ベルトガード/BELT GUARD



NO.	部品番号 PARTS NO.	数量 QTY	品名	DESCRIPTION
1	20440C	1	ベルトガード(組)	BELT GUARD COMPLETE
2	20440	1	ベルトガード本体	BELT GUARD BODY
3	20441	1	横ベルトカバー	SIDE BELT COVER
4	20440-01	1	補助ベルトカバー	AUXILIARY BELT COVER
5	20276	2	ベルトガード止めねじ	SCREW 3/16X30 L=7
6	10650	1	ベルトガード止めねじ(下)	SCREW 3.4X36 L=6
7	6339	3	横ベルトカバー止めねじ	SCREW 1/8X44 L=4
8	11830	1	補助ベルトカバー止めねじ	SCREW 9/64X40
9	15081	2	補助ベルトカバー木ねじ	WOOD SCREW
10	16287	2	補助ベルトカバー木ねじワッシャー	WASHER

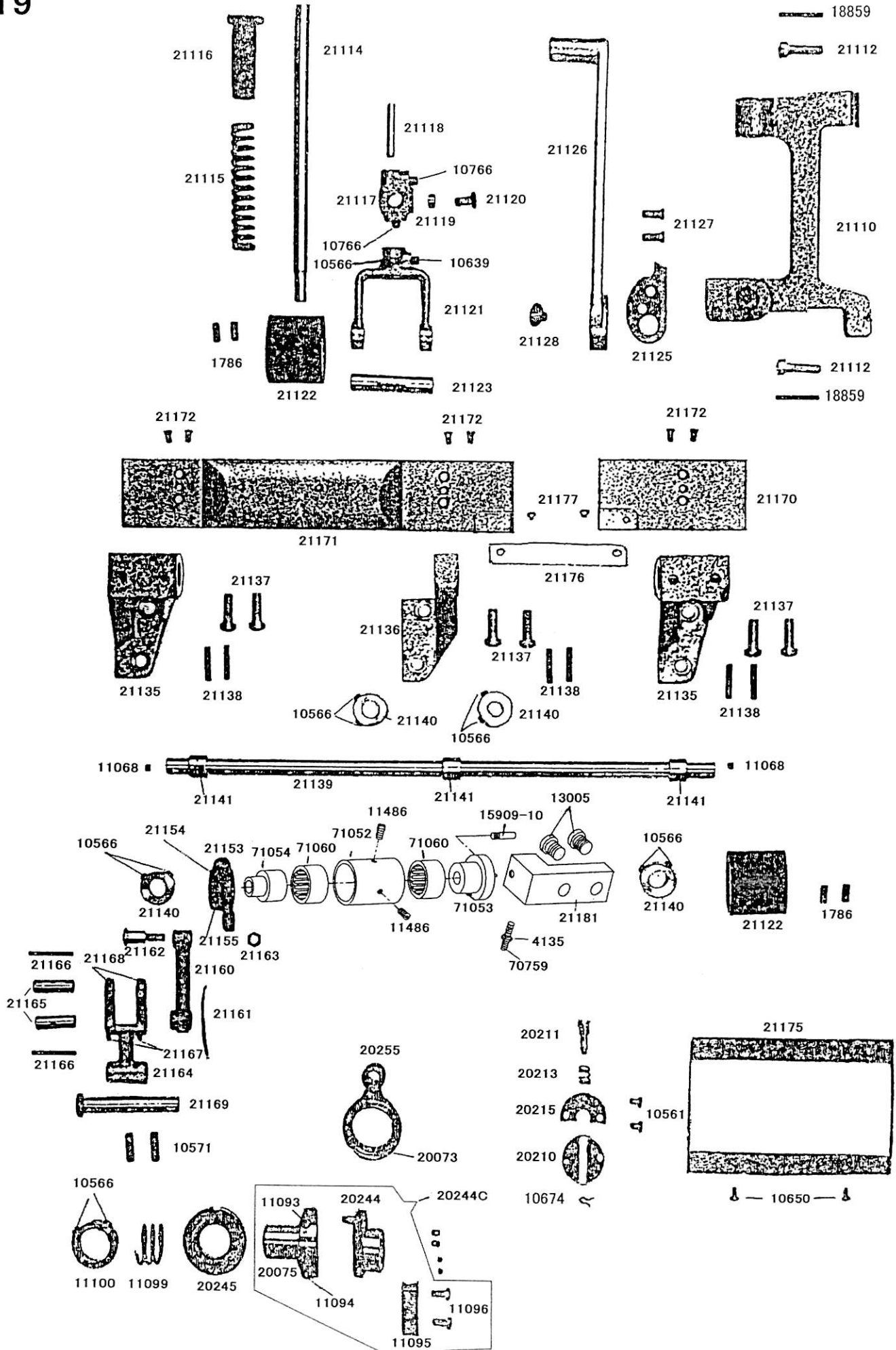
* エアー式押え上げ(FL)／
FOOT AIR LIFTER (MODEL LD-FL)



No.	PARTS No.	QTY	品名	DESCRIPTION
1	22091	2	FLシリンダー取付板	CYLINDER BRACKET FL
2	22092	1	FL連結板	LINK PLATE FL
3	22093	1	FL二山ナックル	KNUCKLE FL
4	22094	1	FLエアーシリンダー	AIR CYLINDER FL
5	28031	1	二山ナックル止	BOLT, SOCKET M6 × 1 L=14
6	28076	12	シリンダー取付ネジ	BOLT, SOCKET M6 × 1 L=18
7	30715	1	二山ナックルピン	COUPLING PIN
8	4839	2	止め輪 E-4	RETAINING RING E-4
9	70567	2	エアー継手	AIR JOINT (ELBOW)

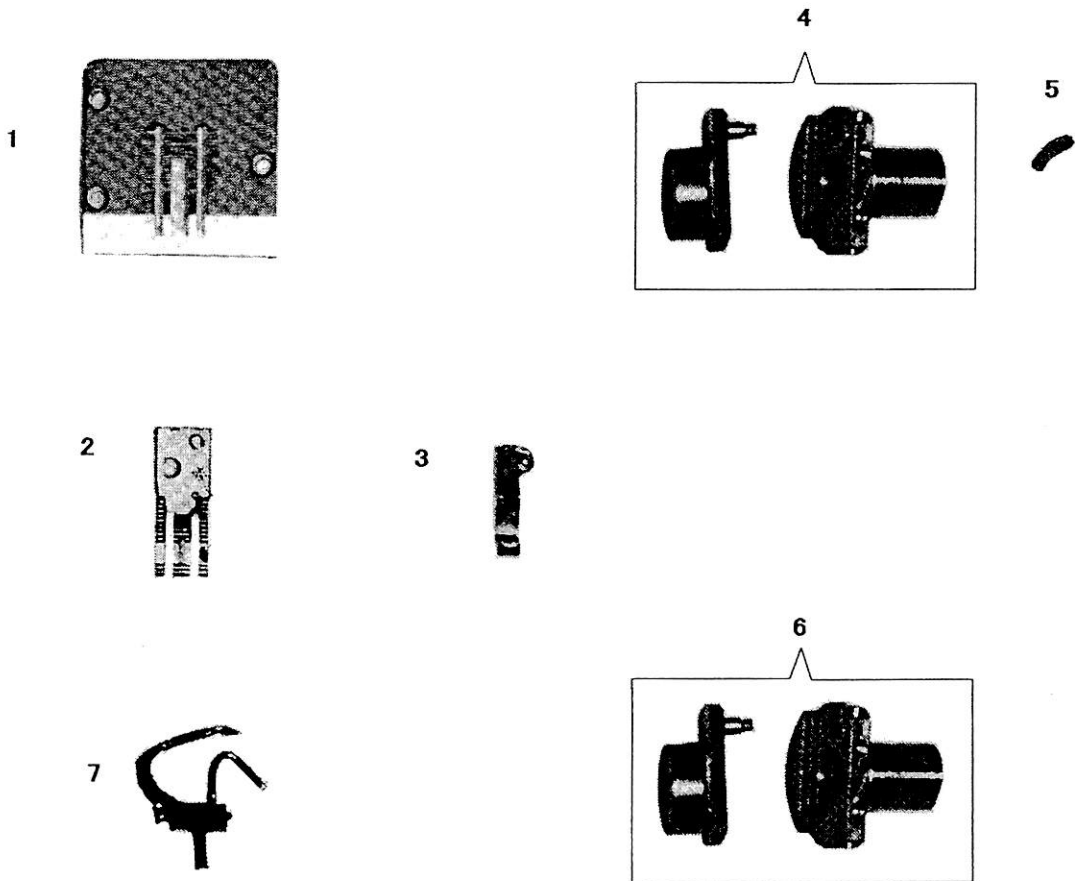
Puller mechanism (MODEL LD-FL)

プーラー関係



SPECIAL PARTS FOR MODEL LD-CS

Fig. No.	Parts No.	Quantity	Name
1	20275-A	1	Throat plate
2	20268-A	1	Feed dog
3	20129-A	1	Vibrating presser foot
4	20250C	1	Upper feed driving eccentric and flange
5	20442	1	Upper feed driving eccentric disc spacer
6	20249C	1	Lower feed driving eccentric and flange
7	27077C	1	Looper complete



SEIKO SEWING MACHINE CO., LTD.

2-13-6 Sakaecho, Funabashi-shi Chiba Prefecture,
273-0018, Japan

TEL: 81-47-420-3561 (Overseas dept.)

FAX: 81-47-420-3560

E-mail: export@seiko-sewing.co.jp

<http://www.seiko-sewing.co.jp/>

Parts No. PB34303 (0715)

Rev. 1.2