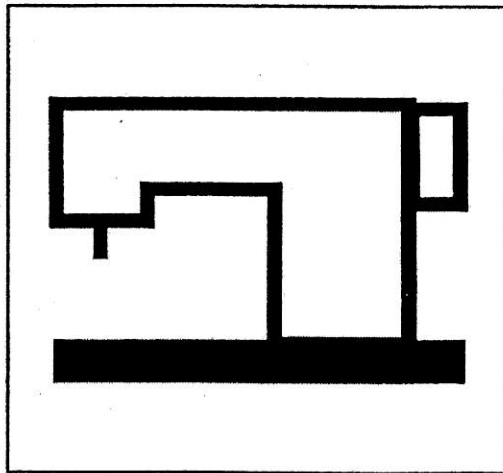


SEIKO

PARTS LIST パーツリスト

LSW-8LVMF

LSW-8BLVMF

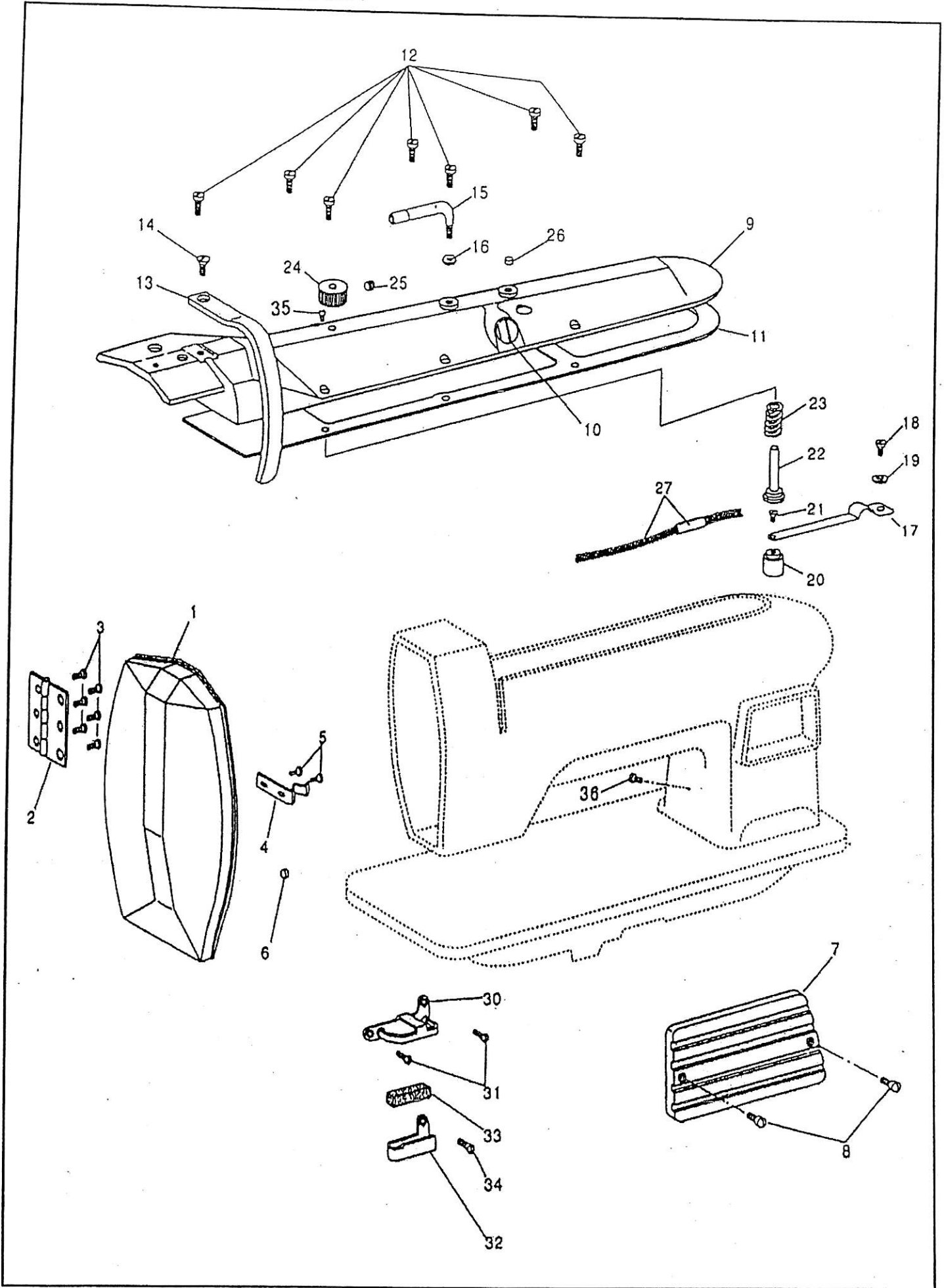


SEIKO SEWING MACHINE CO., LTD.

INDEX

| | |
|--|--------|
| 面板、上板 FACE PLATE, ARM TOP COVER | 1, 2 |
| 天秤、上軸、プーリー THREAD TAKE-UP LEVER, ARM SHAFT, MACHINE PULLEY | 3, 4 |
| 押え棒、中押え棒 PRESSER BAR, VIBRATING PRESSER BAR | 5, 6 |
| 針棒土台、連結ロッド NEEDLE BAR ROCK FRAME, ROCK SHAFT CRANK CONNECTION | 7, 8 |
| 大弓、押え棒大板ばね KNEE LIFTER, LIFTING LEVER, PRESSER BAR SPRING | 9, 10 |
| 下軸、下ベルトプーリー、送りカム HOOK DRIVING SHAFT, SAFETY CLUTCH PULLEY, FEED DRIVING CAM | 11, 12 |
| 針板、送り土台、送り軸 THROAT PLATE, FEED BAR, FEED ROCK SHAFT | 13, 14 |
| バックレバー、下送りロッド FEED REVERSING LEVER, FEED DRIVING ECCENTRIC CONNECTION | 15, 16 |
| カマ土台、カマ HOOK SADDLE, HOOK | 17, 18 |
| 調子板 TENSION BRACKET | 19, 20 |
| 給油 LUBRICATION | 21, 22 |
| バインダー受板、バインダー受台 BINDER SET PLATE, BINDER BASE | 23, 24 |
| メス機構1 TRIMMING MECHANISM 1 | 25, 26 |
| メス機構2 TRIMMING MECHANISM 2 | 27, 28 |
| 付属品1 ACCESSORIES 1 | 29, 30 |
| 付属品2 ACCESSORIES 2 | 31, 32 |
| 別売品 PARTS AVAILABLE AT EXTRA CHARGE | 33, 34 |
| ゲージ表 TABLE OF GAUGE PARTS | 35 |

面板、上板
FACE PLATE, ARM TOP COVER



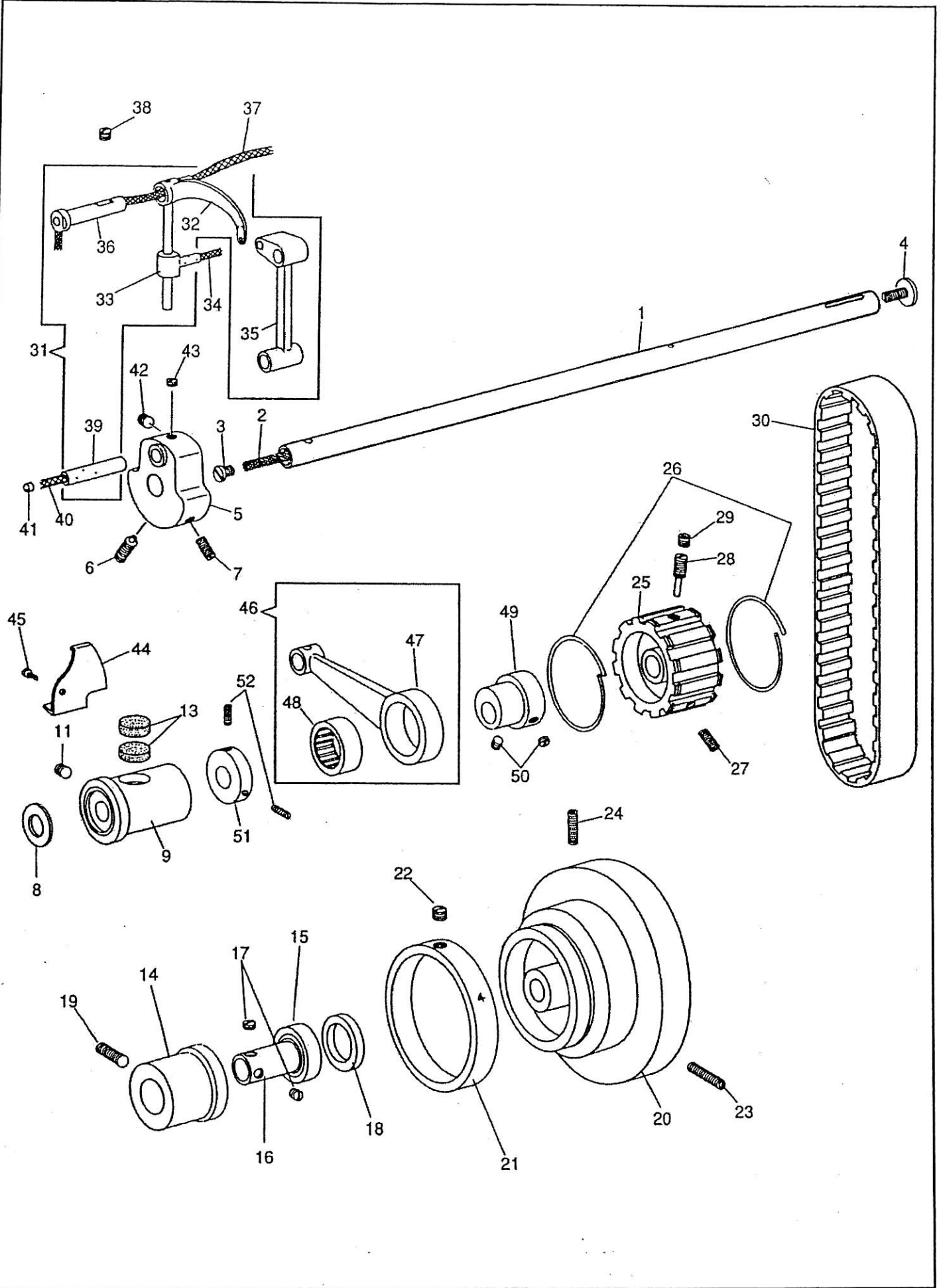
面板、上板

FACE PLATE, ARM TOP COVER

| NO. | 部品番号 PARTS NO. | 8LYMF | 8BLVMF | 数量 QTY | 品名 | DESCRIPTION |
|-----|-------------------|-------|--------|-----------|----------------|--------------------------------|
| 1 | 15035 | * | * | 1 | 面板 | FACE PLATE |
| 2 | 15036 | * | * | 1 | 蝶番 | HINGE |
| 3 | 15039 | * | * | 6 | 止めねじ | SCREW 1/8×44 L=3.5 |
| 4 | 15037 | * | * | 1 | 面板ばね | FACE PLATE SPRING |
| 5 | 15039 | * | * | 2 | 止めねじ | SCREW 1/8×44 L=3.5 |
| 6 | 15038 | * | * | 1 | 面板ゴム | RUBBER |
| 7 | 15006 | * | * | 1 | 横板 | ARM SIDE COVER |
| 8 | 8040 | * | * | 2 | 止めねじ | SCREW 9/64×40 L=8.0 |
| 9 | 15003 | * | * | 1 | 上板 | ARM TOP COVER |
| 10 | 11007 | * | * | 1 | 油量覗き窓 | OIL LEVEL INDICATOR |
| 11 | 15004 | * | * | 1 | 上板シートパッキン | GASKET |
| 12 | 15007 | * | * | 7 | 止めねじ | SCREW 9/64×40 L=10.0 |
| 13 | 36708 | * | * | 1 | 天秤カバー | THREAD TAKE-UP COVER |
| 14 | 6031-02 | * | * | 1 | 止めねじ | SCREW 11/64×40 L=9.0 |
| 15 | 11006 | * | * | 1 | 上板糸掛 | ARM TOP COVER THREAD GUIDE |
| 16 | 13076-02 | * | * | 1 | ナット | NUT 7/32×32 |
| 17 | 15086 | * | * | 1 | 油調節板ばね | OIL CONTROL SPRING |
| 18 | 8040 | * | * | 1 | 止めねじ | SCREW 9/64×40 L=8.0 |
| 19 | 11142 | * | * | 1 | ワッシャー | WASHER |
| 20 | 11004 | * | * | 1 | 油調節おもり | OIL REGULATOR |
| 21 | 10597 | * | * | 1 | 止めねじ | SCREW 1/8×40 L=3.3 |
| 22 | 15058 | * | * | 1 | 給油遮断軸 | OIL REGULATING STUD |
| 23 | 15059 | * | * | 1 | 給油遮断スプリング | OIL REGULATING SPRING |
| 24 | 15057 | * | * | 1 | 給油遮断ダイヤル | OIL REGULATING DIAL |
| 25 | 8009 | * | * | 1 | 止めねじ | SET SCREW 15/64×28 L=7.5 |
| 26 | 15038 | * | * | 1 | 上板ゴム栓 | RUBBER |
| 27 | 15034C | * | * | 1 | ビニールチューブ、油芯(組) | OIL TUBE AND OIL WICK COMPLETE |
| 30 | 15054 | * | * | 1 | 面糸掛け(上) | THREAD GUIDE (UPPER) |
| 31 | 10685 | * | * | 2 | 止めねじ | SCREW 3.4×36 L=6.5 |
| 32 | 10759-A | * | * | 1 | 面糸掛け(下) | THREAD GUIDE (LOWER) |
| 33 | 10760 | * | * | 1 | 面糸掛けフェルト | FELT |
| 34 | 10685 | * | * | 1 | 止めねじ | SCREW 3.4×36 L=6.5 |
| 35 | 15061 | * | * | 1 | 給油遮断ピン | OIL REGULATING PIN |
| 36 | 30046 | * | * | 1 | アース線止めねじ | EARTH WIRE SCREW M4×0.7 L=4.0 |

天秤、上軸、プーリー

THREAD TAKE-UP LEVER, ARM SHAFT, MACHINE PULLEY

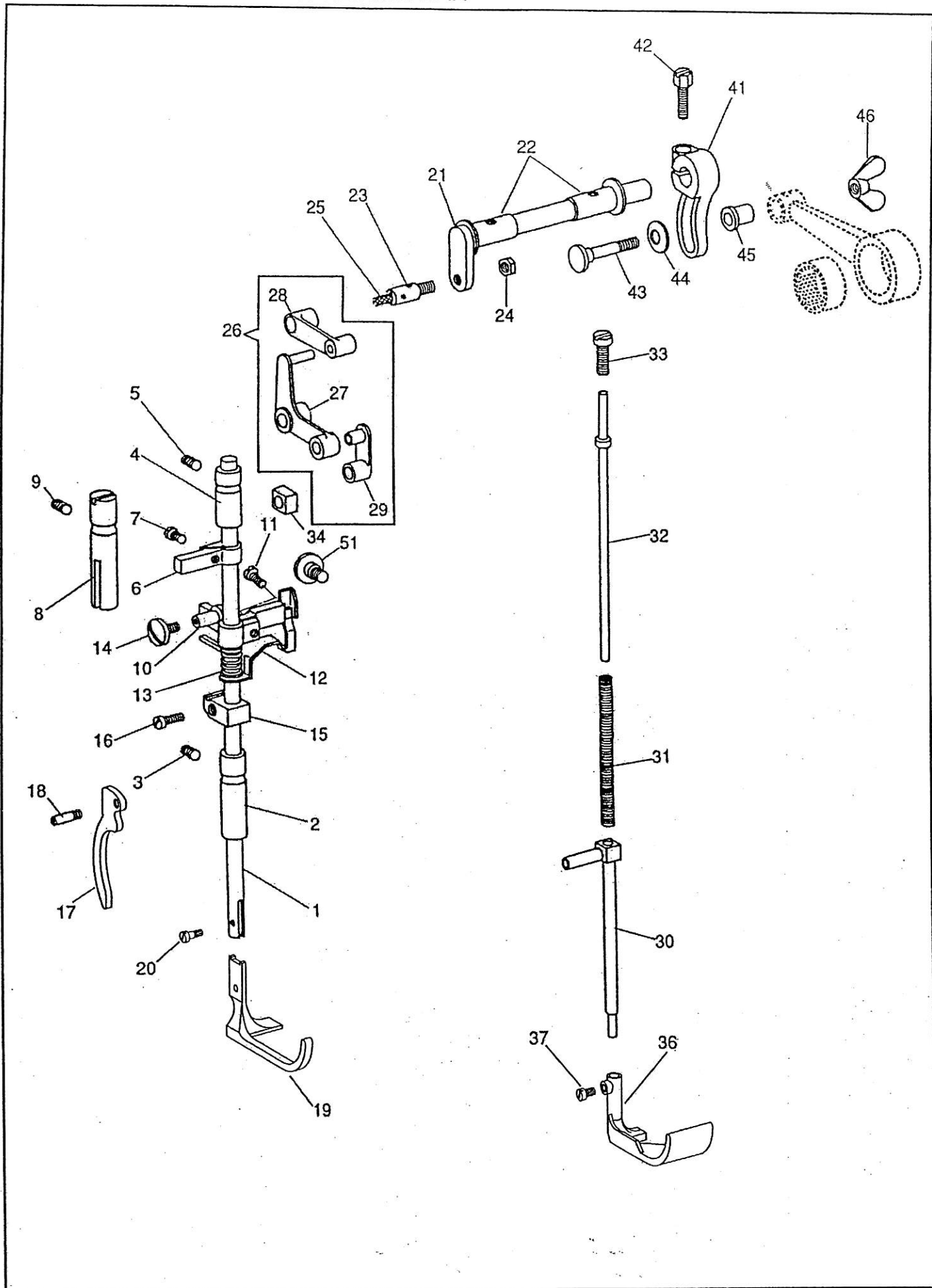


天秤、上軸、プーリー

THREAD TAKE-UP LEVER, ARM SHAFT, MACHINE PULLEY

| NO. | 部品番号 PARTS NO. | 8LVMF | 8BLVMF | 数量 QTY | 品名 | DESCRIPTION |
|-----|-------------------|-------|--------|-----------|-----------------|---|
| 1 | 15011 | * | - | 1 | 上軸 | ARM SHAFT |
| 1 | 15209 | - | * | 1 | 上軸 | ARM SHAFT |
| 2 | 11042 | * | * | 1 | 上軸油芯 | OIL WICK |
| 3 | 10506 | * | * | 1 | 上軸油栓ねじ | OIL STOP SCREW 7.85×20 L=6.0 |
| 4 | 10577 | * | * | 1 | プーリー押しねじ | PULLEY ADJUSTING SCREW 6.75×24 L=11.0 |
| 5 | 19414 | * | * | 1 | クランクモーションカム | NEEDLE BAR CRANK |
| 6 | 19415-A | * | * | 1 | 位置決めねじ | POSITION SCREW 1/4×28 L=20.0 |
| 7 | 19416 | * | * | 1 | 止めねじ | SET SCREW 1/4×28 L=14.0 |
| 8 | 10563 | * | * | 1 | 上軸メタル(前)ワッシャー | WASHER |
| 9 | 10562 | * | * | 1 | 上軸メタル(前) | ARM SHAFT BUSHING (FRONT) |
| 11 | 10524 | * | * | 1 | 止めねじ | SET SCREW 6.75×24 L=6.5 |
| 13 | 10725 | * | * | 2 | 上軸メタル(前)フェルト | OIL FELT |
| 14 | 13074 | * | * | 1 | 上軸ベアリングケース | ARM SHAFT BALL BEARING ADAPTOR |
| 15 | 10567 | * | * | 1 | 上軸ベアリング | ARM SHAFT BALL BEARING |
| 16 | 13361 | * | * | 1 | 上軸ベアリングカラー | ARM SHAFT BALL BEARING ADAPTOR SLEEVE |
| 17 | 23637 | * | * | 2 | 止めねじ | SET SCREW 1/4×28 L=7.5 |
| 18 | 10568 | * | * | 1 | 溝なしリング | BALL BEARING RETAINING RING |
| 19 | 10571 | * | * | 1 | 上軸ベアリングケース止めねじ | SCREW 6.75×24 L=20.0 |
| 20 | 10504 | * | * | 1 | プーリー | MACHINE PULLEY |
| 21 | 10505-B | * | - | 1 | 文字リング(ベルトガード無用) | FEED INDICATING DISC (WITHOUT BELT GUARD) |
| 21 | 10505-A | * | - | (1) | 文字リング(ベルトガード付用) | FEED INDICATING DISC (WITH BELT GUARD) |
| 21 | 10943-B | - | * | 1 | 文字リング(ベルトガード無用) | FEED INDICATING DISC (WITHOUT BELT GUARD) |
| 21 | 10943-A | - | * | (1) | 文字リング(ベルトガード付用) | FEED INDICATING DISC (WITH BELT GUARD) |
| 22 | 10566 | * | * | 1 | 文字リング止めねじ | SETSCREW 1/4×32 L=5.5 |
| 23 | 10576 | * | * | 1 | 位置決めねじ | POSITION SCREW 15/64×28 L=21.0 |
| 24 | 10579 | * | * | 1 | 止めねじ | SET SCREW 15/64×28 L=20.0 |
| 25 | 10569 | * | * | 1 | ベルトプーリー | ARM SHAFT CONNECTING BELT PULLEY |
| 26 | 10574 | * | * | 2 | ベルトプーリーリング | BELT PULLEY SPRING FLANGE |
| 27 | 10571-G | * | * | 1 | ベルトプーリー止めねじ | SET SCREW 6.75×24 L=20.0 |
| 28 | 10570 | * | * | 1 | ベルトプーリーピンねじ | POSITION SCREW 6.75×24 L=14.5 |
| 29 | 10524-G | * | * | 1 | ベルトプーリーピンねじ止めねじ | POSITION SCREW SET SCREW 6.75×24 L=6.5 |
| 30 | 10621 | * | * | 1 | タイミングベルト | ARM SHAFT CONNECTING BELT |
| 31 | 15024C | * | * | 1 | 天秤(組) | THREAD TAKE-UP LEVER COMPLETE |
| 32 | 15024 | * | * | 1 | 天秤 | THREAD TAKE-UP LEVER |
| 33 | 15026 | * | * | 1 | 天秤抱き | THREAD TAKE-UP LEVER DRIVING STUD |
| 34 | 10728 | * | * | 1 | 天秤抱き油芯 | OIL WICK |
| 35 | 10528 | * | * | 1 | 針棒クランク | NEEDLE BAR CONNECTING LINK |
| 36 | 15013 | * | * | 1 | 天秤ピン | THREAD TAKE-UP LEVER HINGE STUD |
| 37 | 11042 | * | * | 1 | 天秤ピン油芯 | OIL WICK |
| 38 | 10524 | * | * | 1 | 天秤ピン止めねじ | SET SCREW 6.75×24 L=6.5 |
| 39 | 10523 | * | * | 1 | 針棒クランクピン | NEEDLE BAR CONNECTING LINK STUD |
| 40 | 10726 | * | * | 1 | 針棒クランクピン油芯 | OIL WICK |
| 41 | 15038 | * | * | 1 | 油ゴム栓 | RUBBER OIL STOPPER |
| 42 | 19417 | * | * | 1 | 針棒クランクピン止めねじ(長) | SCREW 1/4×28 L=6.5 |
| 43 | 19418 | * | * | 1 | 針棒クランクピン止めねじ(短) | SCREW 1/4×28 L=4.5 |
| 44 | 10551 | * | * | 1 | 天秤油受け | THREAD TAKE-UP LEVER OIL GUARD |
| 45 | 10650 | * | * | 1 | 天秤油受け止めねじ | SCREW 3.4×36 L=6.0 |
| 46 | 10772C | * | * | 1 | 上連結ロッド(組) | LIFTING ECCENTRIC CONNECTION COMPLETE |
| 47 | 10772 | * | * | 1 | 上連結ロッド | LIFTING ECCENTRIC CONNECTION |
| 48 | 10773 | * | * | 1 | ニードルベアリング | NEEDLE BEARING |
| 49 | 19427 | * | * | 1 | 中押え上下カム | LIFTING ECCENTRIC |
| 50 | 19508 | * | * | 2 | 中押え上下カム止めねじ | SET SCREW 1/4×40 L=5.5 |
| 51 | 11879 | * | * | 1 | 中押え上下カムカラー | LIFTING ECCENTRIC COLLAR |
| 52 | 10573 | * | * | 2 | 中押え上下カムカラー止めねじ | SET SCREW 7/32×32 L=11.0 |

押え棒、中押え棒
 PRESSER BAR, VIBRATING PRESSER BAR

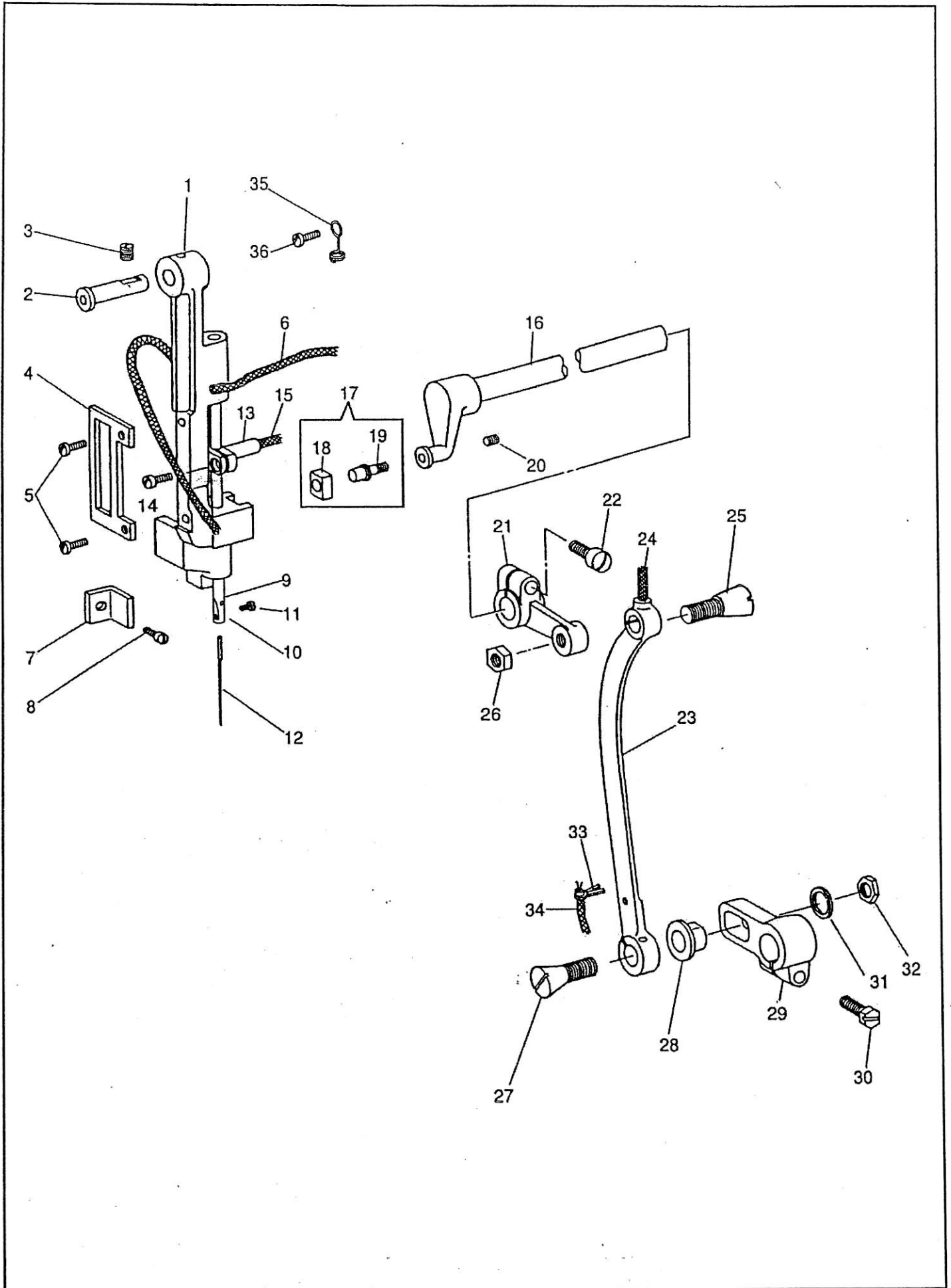


押え棒、中押え棒

PRESSER BAR, VIBRATING PRESSER BAR

| NO. | 部品番号 PARTS NO. | 8LVMF | 8BLVMF | 数量 QTY | 品名 | DESCRIPTION |
|-----|-------------------|-------|--------|-----------|----------------|---|
| 1 | 10540 | * | * | 1 | 押え棒 | PRESSER BAR |
| 2 | 10539-A | * | * | 1 | 押え棒(下)メタル | PRESSER BAR BUSHING (LOWER) |
| 3 | 12408 | * | * | 1 | 止めねじ | SET SCREW 6.75×24 L=7.5 |
| 4 | 10538 | * | * | 1 | 押え棒(上)メタル | PRESSER BAR BUSHING (UPPER) |
| 5 | 10761 | * | * | 1 | 止めねじ | SET SCREW 6.75×24 L=11.0 |
| 6 | 10541 | * | * | 1 | 押え棒案内 | PRESSER BAR POSITION GUIDE BRACKET |
| 7 | 10662 | * | * | 1 | 止めねじ | SCREW 5/32×40 L=6.5 |
| 8 | 10543 | * | * | 1 | 案内棒 | PRESSER BAR POSITION GUIDE |
| 9 | 10761 | * | * | 1 | 止めねじ | SET SCREW 6.75×24 L=11.0 |
| 10 | 18479 | * | * | 1 | 押え棒抱き | PRESSER BAR LIFTING BRACKET |
| 11 | 19518 | * | * | 1 | 押え棒抱き締めねじ | SCREW 11/64×40 L=14.0 |
| 12 | 10546-A | * | * | 1 | 押え棒抱き下板 | TENSION RELEASE SLIDE |
| 13 | 10547 | * | * | 1 | 押え棒抱き下板ばね | TENSION RELEASE SPRING |
| 14 | 18480 | * | * | 1 | くの字止めねじ | LIFTING BELL CRANK SCREW 11/64×40 L=8.0 |
| 15 | 13360 | * | * | 1 | 押え棒抱きリング | PRESSER BAR SPRING BRACKET |
| 16 | 13365 | * | * | 1 | 押え棒抱きリング締めねじ | PINCH SCREW M4×0.7 L=9.0 |
| 17 | 13055 | * | * | 1 | 押え上げレバー | PRESSER BAR LIFTER |
| 18 | 10660 | * | * | 1 | 押え上げレバーピンねじ | HINGE SCREW 4.5×32 |
| 19 | 90517 | * | * | 1 | 外押え | LIFTING PRESSER FOOT |
| 20 | 10664 | * | * | 1 | 外押え止めねじ | SCREW 3.4×36 L=9.0 |
| 21 | 19425 | * | * | 1 | 横軸 | LIFTING ROCK SHAFT |
| 22 | 10514 | * | * | 2 | 横軸メタル | LIFTING ROCK SHAFT BUSHING |
| 23 | 16709 | * | * | 1 | 横軸ピンねじ | SCREW 1/4×28 |
| 24 | 19516 | * | * | 1 | 横軸ピンねじナット | NUT 1/4×28 |
| 25 | 10728 | * | * | 1 | 横軸ピンねじ油芯 | OIL WICK |
| 26 | 10558C | * | * | 1 | くの字セット | LIFTING BELL CRANK COMPLETE |
| 27 | 10558 | * | * | 1 | くの字 | LIFTING BELL CRANK |
| 28 | 10557 | * | * | 1 | くの字連結(大) | LIFTING BELL CRANK LINK |
| 29 | 10556 | * | * | 1 | くの字連結(小) | VIBRATING PRESSER BAR CONNECTING LINK |
| 30 | 34713 | * | * | 1 | 中押え棒 | VIBRATING PRESSER BAR |
| 31 | 17042 | * | * | 1 | 中押えスプリング | VIBRATING PRESSER BAR EXTENSION SPRING |
| 32 | 10553-A | * | * | 1 | 中押えスプリング棒 | VIBRATING PRESSER BAR EXTENSION |
| 33 | 15060 | * | * | 1 | 中押え棒押しねじ | SCREW 5/16×24 L=16.0 |
| 34 | 15118 | * | * | 1 | 振れ止角玉 | VIBRATING PRESSER BAR SLIDE BLOCK |
| 36 | 90518 | * | * | 1 | 中押え(標準) | VIBRATING PRESSER FOOT (STANDARD) |
| 37 | 17111 | * | * | 1 | 中押え止めねじ | PINCH SCREW 11/64×32 L=6.0 |
| 41 | 19419 | * | * | 1 | 上下カム連結だるま | LIFTING ECCENTRIC CONNECTING CRANK |
| 42 | 19420 | * | * | 1 | 上下カム連結だるま締めねじ | PINCH SCREW 1/4×28 L=16.0 |
| 43 | 10775 | * | * | 1 | 上連結ロッド段ねじ | HINGE SCREW 7/32×32 |
| 44 | 10703 | * | * | 1 | 上連結ロッド段ねじワッシャー | WASHER |
| 45 | 10774 | * | * | 1 | 上連結ロッドパイプ | LIFTING ECCENTRIC CONNECTION COLLAR |
| 46 | 10776 | * | * | 1 | 上連結ロッド蝶ナット | NUT 7/32×32 |
| 51 | 10548 | * | * | 1 | 大安定ねじ | LIFTING BRACKET GUIDE SCREW 6.75×24 |

針棒土台、連結ロッド
NEEDLE BAR ROCK FRAME, ROCK SHAFT CRANK CONNECTION

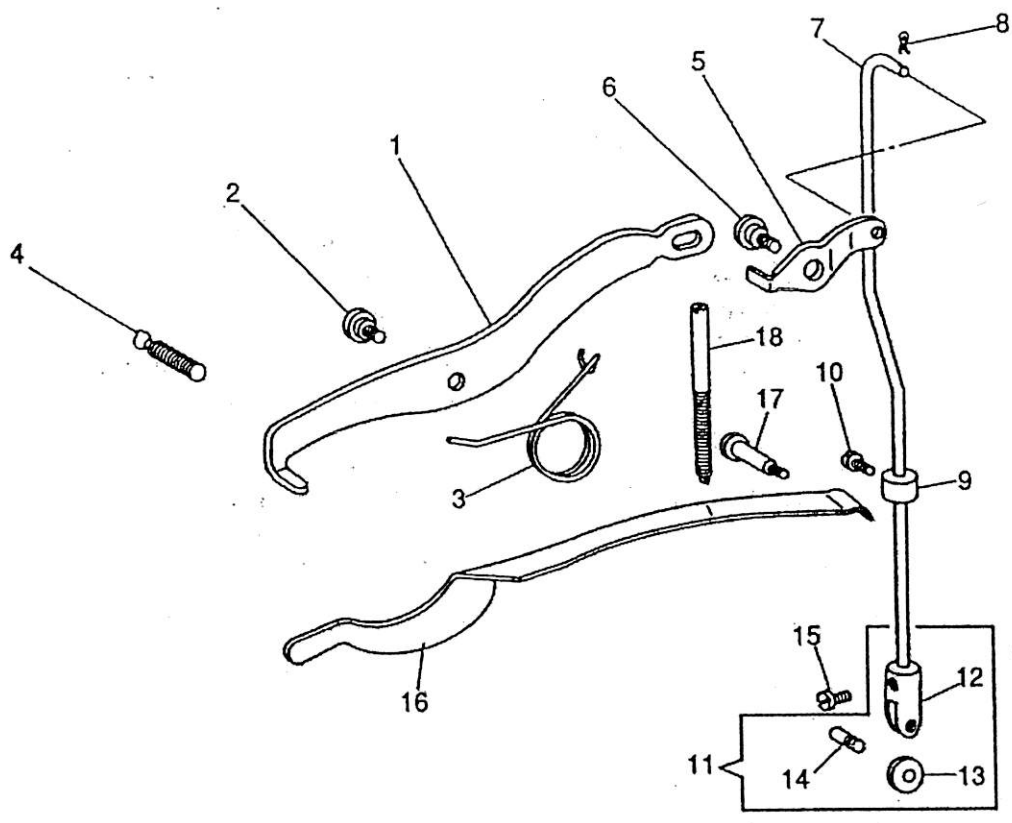


針棒土台、連結ロッド

NEEDLE BAR ROCK FRAME, ROCK SHAFT CRANK CONNECTION

| NO. | 部品番号 PARTS NO. | 8LVMF | 8BLVMF | 数量 QTY | 品名 | DESCRIPTION |
|-----|-------------------|-------|--------|-----------|----------------|--|
| 1 | 15110-A | * | * | 1 | 針棒土台 | NEEDLE BAR ROCK FRAME |
| 2 | 11875 | * | * | 1 | 針棒土台ピン | HINGE STUD |
| 3 | 10525 | * | * | 1 | 止めねじ | SET SCREW 6.75×24 L=9.0 |
| 4 | 15117 | * | * | 1 | 振れ止板 | SLIDE BLOCK PLATE |
| 5 | 8100 | * | * | 2 | 振れ止板止めねじ | SCREW 9/64×40 L=6.5 |
| 6 | 15031 | * | * | 1 | 針棒土台油芯 | OIL WICK |
| 7 | 10560 | * | * | 1 | イケール | NEEDLE BAR ROCK FRAME POSITION BRACKET |
| 8 | 10561 | * | * | 1 | 止めねじ | LIFTING BRACKET GUIDE SCREW 11/64×32 L=6.5 |
| 9 | 12430-A | * | * | 1 | 針棒 | NEEDLE BAR |
| 11 | 10535 | * | * | 1 | 針止めねじ | NEEDLE SET SCREW 3.4×36 L=4.5 |
| 12 | N0820 | * | * | 1 | 針 | NEEDLE |
| 13 | 19426 | * | * | 1 | 針棒抱き | NEEDLE BAR CONNECTING STUD |
| 14 | 13365 | * | * | 1 | 針棒抱き締めねじ | PINCH SCREW M4×0.7 L=9.0 |
| 15 | 10726 | * | * | 1 | 針棒抱き油芯 | OIL WICK |
| 16 | 10578 | * | * | 1 | 上送り竿 | NEEDLE BAR ROCK FRAME ROCK SHAFT |
| 17 | 11876C | * | * | 1 | 上送り竿角玉(組) | SLIDE BLOCK COMPLETE |
| 18 | 11877 | * | * | 1 | 上送り竿角玉 | SLIDE BLOCK |
| 19 | 11876 | * | * | 1 | 上送り竿ピンねじ | SLIDE BLOCK STUD |
| 20 | 10581 | * | * | 1 | 上送り竿ピンねじ止めねじ | SET SCREW 7/32×32 L=7.0 |
| 21 | 15016 | * | * | 1 | 連結 | ROCK SHAFT CRANK |
| 22 | 10519 | * | * | 1 | 連結締めねじ | PINCH SCREW 6.75×24 L=17.5 |
| 23 | 10756 | * | * | 1 | 連結ロッド | ROCK SHAFT CRANK CONNECTION |
| 24 | 10728 | * | * | 1 | 連結ロッド油芯 | OIL WICK |
| 25 | 8014 | * | * | 1 | 連結ロッド皿ねじ(小) | HINGE SCREW 9/32×28 L=13.1 |
| 26 | 8105 | * | * | 1 | 連結ロッド皿ねじ(小)ナット | NUT 9/32×28 |
| 27 | 10758 | * | * | 1 | 連結ロッド皿ねじ(大) | HINGE SCREW 11/32×28 L=26.0 |
| 28 | 15017 | * | * | 1 | 送り調節パイプ | NEEDLE BAR ROCK FRAME REGULATING PIPE |
| 29 | 15019 | * | * | 1 | 送り竿後だるま | FEED ROCK SHAFT CRANK |
| 30 | 10754 | * | * | 1 | 送り竿後だるま締めねじ | PINCH SCREW 6.75×24 L=16.0 |
| 31 | 15018 | * | * | 1 | 調節パイプワッシャー | WASHER |
| 32 | 3036 | * | * | 1 | 連結ロッド皿ねじ(大)ナット | NUT 11/32×28 |
| 33 | 10779 | * | * | 1 | 油芯押え割ピン | CLIP |
| 34 | 10778 | * | * | 1 | 油芯 | OIL WICK |
| 35 | 4221 | * | * | 1 | 油芯押え | OIL WICK RETAINER |
| 36 | 6604 | * | * | 1 | 糸調子棒(短)止めねじ | SCREW 9/64×40 L=12.0 |

大弓、押え棒大板ばね
KNEE LIFTER LIFTING LEVER, PRESSER BAR SPRING



大弓、押え棒大板ばね

KNEE LIFTER LIFTING LEVER, PRESSER BAR SPRING

| NO. | 部品番号 PARTS NO. | 8LVMF | 8BLVMF | 数量 QTY | 品名 | DESCRIPTION |
|-----|-------------------|-------|--------|-----------|---------------|--|
| 1 | 90516 | * | * | 1 | 大弓 | KNEE LIFTER LIFTING LEVER |
| 2 | 10712 | * | * | 1 | 大弓止めねじ | HINGE SCREW 6.75×24 |
| 3 | 13059 | * | * | 1 | 弓ばね | SPRING |
| 4 | 11154 | * | * | 1 | 弓ばね止めねじ | SCREW 6.75×24 |
| 5 | 10711 | * | * | 1 | 小弓 | KNEE LIFTER CONNECTING LEVER |
| 6 | 10712 | * | * | 1 | 小弓止めねじ | HINGE SCREW 6.75×24 |
| 7 | 15075 | * | * | 1 | 吊り棒 | KNEE LIFTER CONNECTING LEVER LIFTING ROD |
| 8 | 15076 | * | * | 1 | 吊り棒止めピン | SET PIN |
| 9 | 10714 | * | * | 1 | 吊り棒カラー | LIFTING ROD COLLAR |
| 10 | 10561 | * | * | 1 | 吊り棒カラー止めねじ | SET SCREW 11/64×32 L=6.5 |
| 11 | 10717C | * | * | 1 | 吊り棒土台(組) | LIFTING ROD ROLLER BRACKET COMPLETE |
| 12 | 10717 | * | * | 1 | 吊り棒土台 | LIFTING ROD ROLLER BRACKET |
| 13 | 10718 | * | * | 1 | 吊り棒土台ローラー | LIFTING ROD ROLLER |
| 14 | 10719 | * | * | 1 | 吊り棒土台ローラー止めねじ | SCREW 3.4×36 |
| 15 | 10561 | * | * | 1 | 吊り棒土台止めねじ | SET SCREW 11/64×32 L=6.5 |
| 16 | 10705 | * | * | 1 | 押え棒大板ばね | PRESSER BAR SPRING (FLAT) |
| 17 | 10706 | * | * | 1 | 大板ばね受けねじ | PRESSER BAR SPRING SUPPORT SCREW |
| 18 | 11156 | * | * | 1 | 大板ばね調節ねじ | PRESSER BAR SPRING REGULATING SCREW |