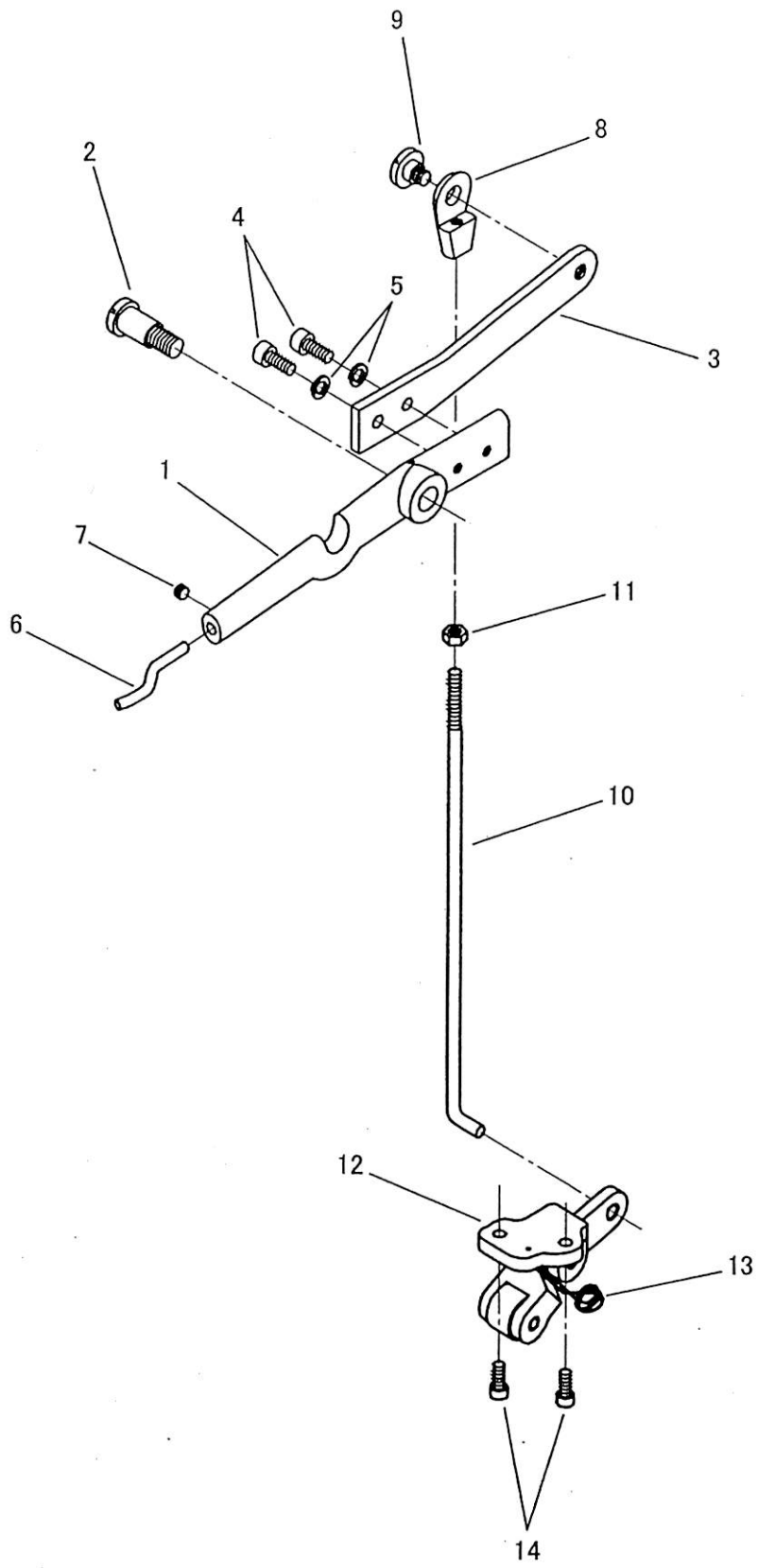


大弓  
KNEE LIFTER LIFTING LEVER



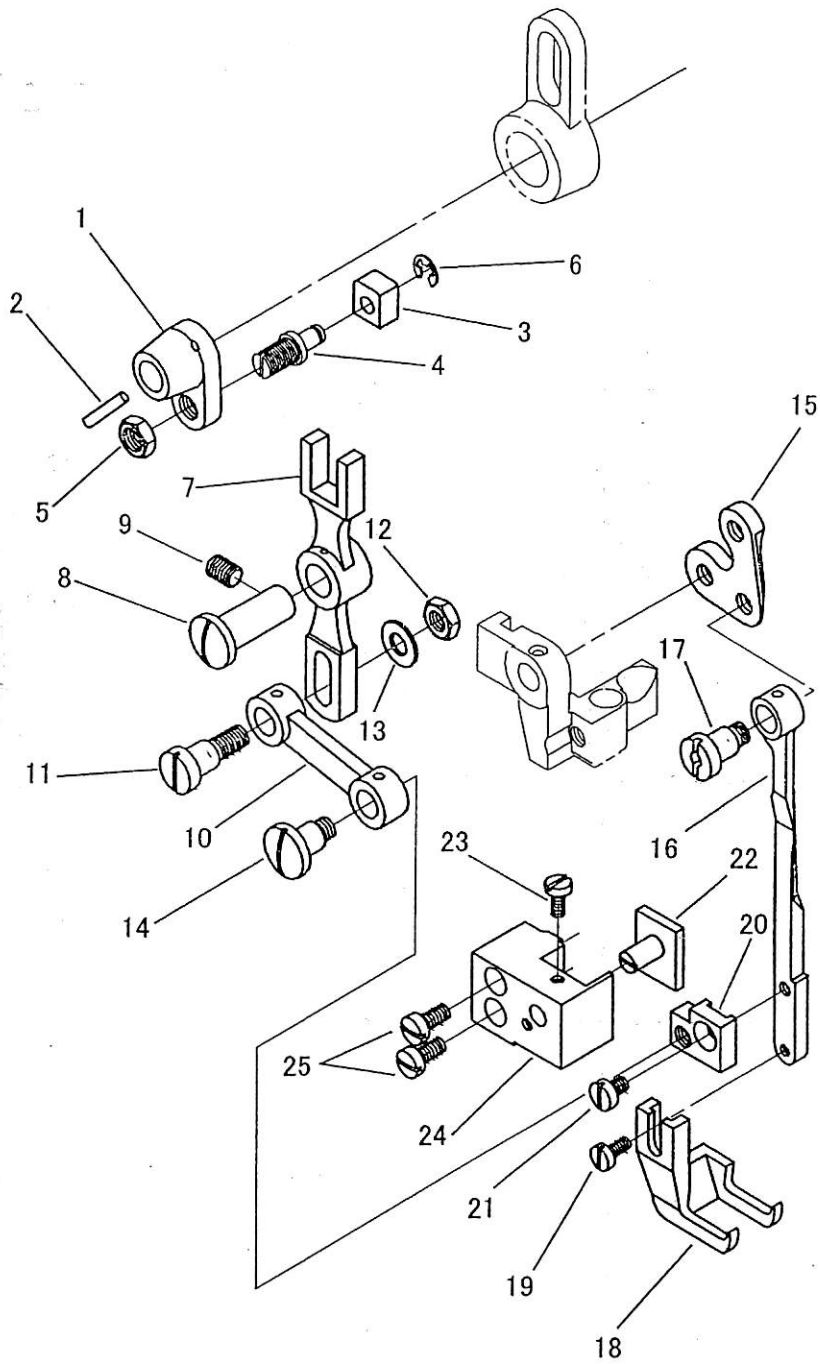
## 大弓

## KNEE LIFTER LIFTING LEVER

| No. | 部品番号<br>PARTS NO. | LZ2-990 | LZ2-992 | 個数<br>QTY | 品名     | DESCRIPTION                                    |
|-----|-------------------|---------|---------|-----------|--------|--|
| 1   | V0217             | *       | *       | 1         | 大弓     | KNEE LIFTER LIFTING LEVER                      |
| 2   | V0218             | *       | *       | 1         | 弓段ねじ   | SCREW  |
| 3   | V0219             | *       | *       | 1         | 小弓     | KNEE LIFTER LIFTING LEVER EXTENSION            |
| 4   | V0220             | *       | *       | 4         | ねじ     | SCREW  |
| 5   | V0221             | *       | *       | 4         | ワッシャー  | WASHER   |
| 6   | V0222             | *       | *       | 1         | 弓先棒    | KNEE LIFTING LEVER PIN                         |
| 7   | V0223             | *       | *       | 1         | ねじ     | SCREW  |
| 8   | V0224             | *       | *       | 1         | 吊り棒だるま | KNEE LIFTER LIFTING LEVER CONNECTING ROD JOINT |
| 9   | V0225             | *       | *       | 1         | ねじ     | SCREW  |
| 10  | V0226             | *       | *       | 1         | 吊り棒    | KNEE LIFTER LIFTING LEVER CONNECTING ROD       |
| 11  | V0227             | *       | *       | 1         | ナット    | NUT  |
| 12  | V0228             | *       | *       | 1         | ひざ上げ   | KNEE LIFTER BELL CRANK                         |
| 13  | V0229             | *       | *       | 2         | ねじ     | SCREW  |
| 14  | V0230             | *       | *       | 1         | ひざ上げばね | KNEE LIFTER BELL CRANK SPRING                  |

上送り機構(1)

UPPER FEED MECHANISM (1)



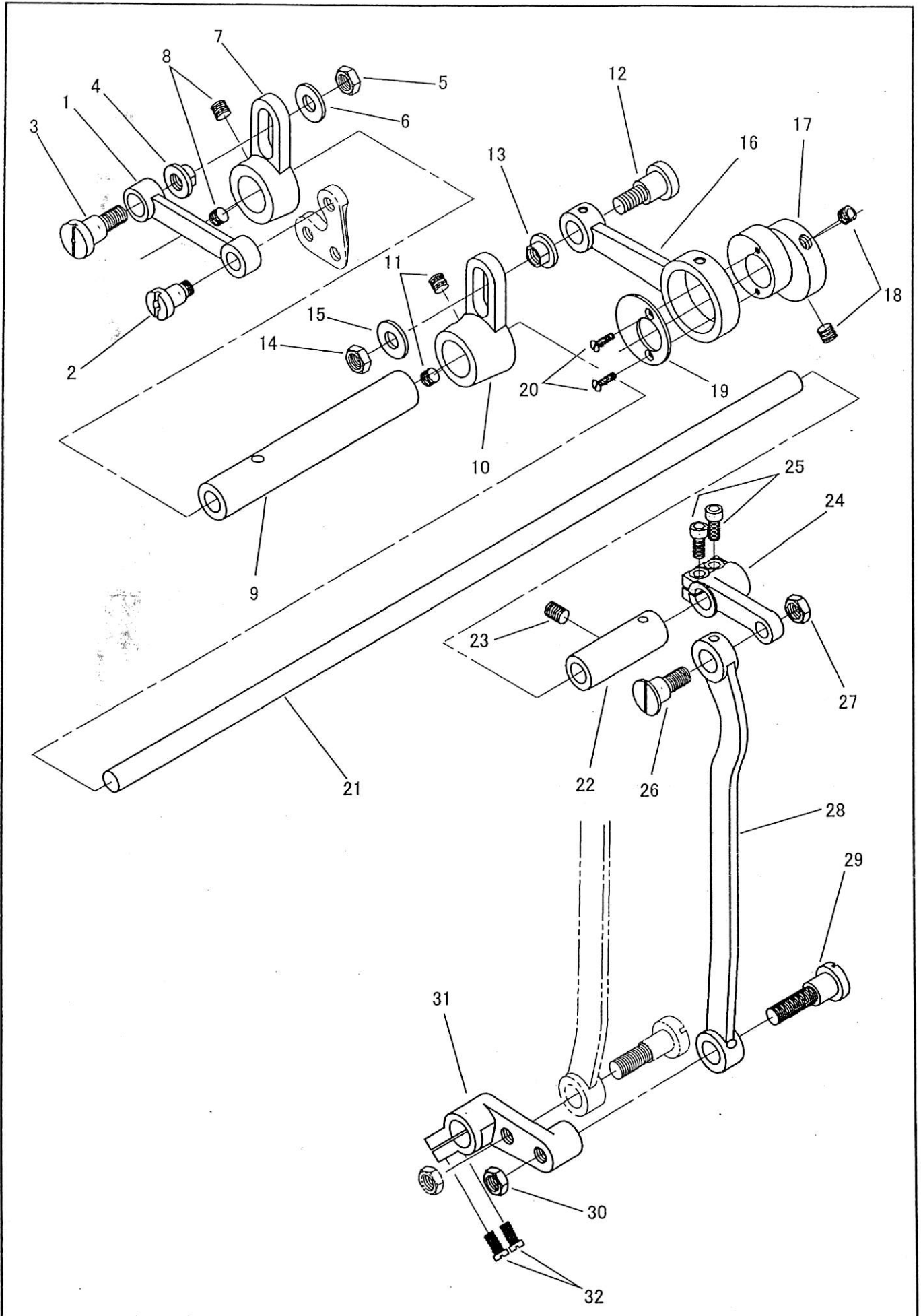
上送り機構(1)

UPPER FEED MECHANISM (1)

| No. | 部品番号<br>PARTS NO. | LZ2-990 | LZ2-992 | 個数<br>QTY | 品名          | DESCRIPTION                              |
|-----|-------------------|---------|---------|-----------|-------------|--|
| 1   | V1310             | -       | *       | 1         | 上送り連結       | UPPER FEED ROCK SHAFT CRANK              |
| 2   | V1311             | -       | *       | 1         | ノックピン       | KNOCK-PIN                                |
| 3   | V1312             | -       | *       | 1         | 上送りニ又角玉     | UPPER FEED FORKED CONNECTION SLIDE BLOCK |
| 4   | V1313             | -       | *       | 1         | 角玉ピンねじ      | HINGE SCREW                              |
| 5   | V1314             | -       | *       | 1         | ナット         | NUT                                      |
| 6   | V1315             | -       | *       | 1         | 止め輪         | RETAINING RING                           |
| 7   | V1316             | -       | *       | 1         | 上送りニ又連結     | UPPER FEED FORKED CONNECTION             |
| 8   | V1317             | -       | *       | 1         | 上送りニ又ピン     | HINGE PIN                                |
| 9   | V1318             | -       | *       | 1         | ねじ          | SCREW                                    |
| 10  | V1319             | -       | *       | 1         | 上送りリンク      | UPPER FEED LEVER LINK                    |
| 11  | V1320             | -       | *       | 1         | リンク段ねじ      | HINGE SCREW                              |
| 12  | V1321             | -       | *       | 1         | ナット         | NUT                                      |
| 13  | V1322             | -       | *       | 1         | ワッシャー       | WASHER                                   |
| 14  | V1323             | -       | *       | 1         | リンク段ねじ      | HINGE SCREW                              |
| 15  | V1324             | -       | *       | 1         | 三つ孔連結       | BELL CRANK                               |
| 16  | V1325             | -       | *       | 1         | 外押え棒        | OUTER PRESSER BAR                        |
| 17  | V1326             | -       | *       | 1         | 三つ孔連結止めねじ   | HINGE SCREW                              |
| 18  | V1327             | -       | *       | 1         | 外押え         | FEED FOOT                                |
| 19  | V1328             | -       | *       | 1         | ねじ          | SCREW                                    |
| 20  | V1329             | -       | *       | 1         | 外押え棒連結      | OUTER PRESSER BAR CONNECTION             |
| 21  | V1330             | -       | *       | 1         | ねじ          | SCREW                                    |
| 22  | V1331             | -       | *       | 1         | 外押え棒振れ止め    | OUTER PRESSER BAR GUIDE                  |
| 23  | V1332             | -       | *       | 1         | ねじ          | SCREW                                    |
| 24  | V1333             | -       | *       | 1         | 外押え棒触れ止め固定台 | OUTER PRESSER BAR GUIDE BRACKET          |
| 25  | V1334             | -       | *       | 2         | ねじ          | SCREW                                    |

上送り機構(2)

UPPER FEED MECHANISM (2)

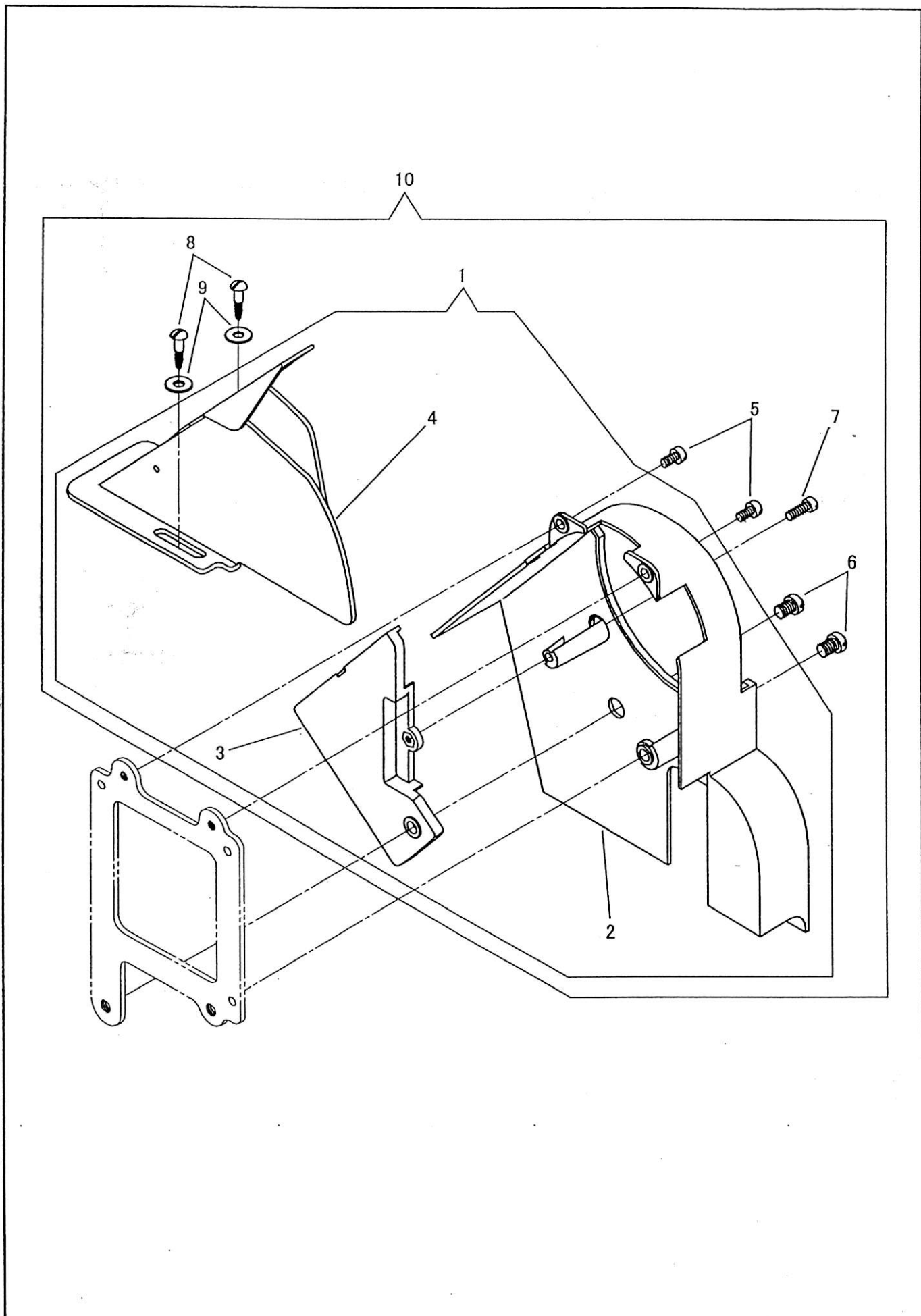


## 上送り機構(2)

## UPPER FEED MECHANISM (2)

| No. | 部品番号<br>PARTS NO. | LZ2-990 | LZ2-992 | 個数<br>QTY | 品名            | DESCRIPTION                          |
|-----|-------------------|---------|---------|-----------|---------------|--------------------------------------|
|     |                   |         |         |           |               |                                      |
| 1   | V1335             | -       | *       | 1         | 上送りメガネ        | BELL CRANK CONNECTING LINK           |
| 2   | V1336             | -       | *       | 1         | 上送りメガネ段ねじ     | HINGE SCREW                          |
| 3   | V1337             | -       | *       | 1         | 上送りメガネ段ねじ     | HINGE SCREW                          |
| 4   | V1338             | -       | *       | 1         | スライドピン        | SLIDE PIN                            |
| 5   | V1339             | -       | *       | 1         | ナット           | NUT                                  |
| 6   | V1340             | -       | *       | 1         | ワッシャー         | WASHER                               |
| 7   | V1341             | -       | *       | 1         | 横軸だるま(左)      | BELL CRANK DRIVING ARM (LEFT)        |
| 8   | V1342             | -       | *       | 2         | ねじ            | SCREW                                |
| 9   | V1343             | -       | *       | 1         | 横軸            | BELL CRANK DRIVING SHAFT             |
| 10  | V1344             | -       | *       | 1         | 横軸だるま(右)      | BELL CRANK DRIVING ARM (RIGHT)       |
| 11  | V1345             | -       | *       | 2         | ねじ            | SCREW                                |
| 12  | V1346             | -       | *       | 1         | 上送りロッド段ねじ     | HINGE SCREW                          |
| 13  | V1347             | -       | *       | 1         | スライドピン        | SLIDE PIN                            |
| 14  | V1348             | -       | *       | 1         | ナット           | NUT                                  |
| 15  | V1349             | -       | *       | 1         | ワッシャー         | WASHER                               |
| 16  | V1350             | -       | *       | 1         | 上送りロッド        | UPPER FEED ECCENTRIC CONNECTION      |
| 17  | V1351             | -       | *       | 1         | 上送りカム         | UPPER FEED ECCENTRIC                 |
| 18  | V1352             | -       | *       | 2         | ねじ            | SCREW                                |
| 19  | V1353             | -       | *       | 1         | 上送りロッド押え      | UPPER FEED ECCENTRIC RETAINER        |
| 20  | V1354             | -       | *       | 2         | ねじ            | SCREW                                |
| 21  | V1355             | -       | *       | 1         | 上送り軸          | UPPER FEED ROCK SHAFT                |
| 22  | V1356             | -       | *       | 1         | 上送り軸メタル       | UPPER FEED ROCK SHAFT BUSHING        |
| 23  | V1357             | -       | *       | 1         | ねじ            | SCREW                                |
| 24  | V1358             | -       | *       | 1         | 上送り軸連結        | UPPER FEED ROCK SHAFT CRANK          |
| 25  | V1359             | -       | *       | 2         | ねじ            | SCREW                                |
| 26  | V1360             | -       | *       | 1         | 上送り立ロッド段ねじ(上) | HINGE SCREW                          |
| 27  | V1361             | -       | *       | 1         | ナット           | NUT                                  |
| 28  | V1362             | -       | *       | 1         | 上送り立ロッド       | UPPER FEED ROCK SHAFT CONNECTING ROD |
| 29  | V1363             | -       | *       | 1         | 上送り立ロッド段ねじ(下) | HINGE SCREW                          |
| 30  | V1364             | -       | *       | 1         | ナット           | NUT                                  |
| 31  | V1365             | -       | *       | 1         | 送り軸だるま        | FEED ROCK SHAFT CRANK                |
| 32  | V1366             | -       | *       | 2         | ねじ            | SCREW                                |

ベルトガード  
BELT GUARD



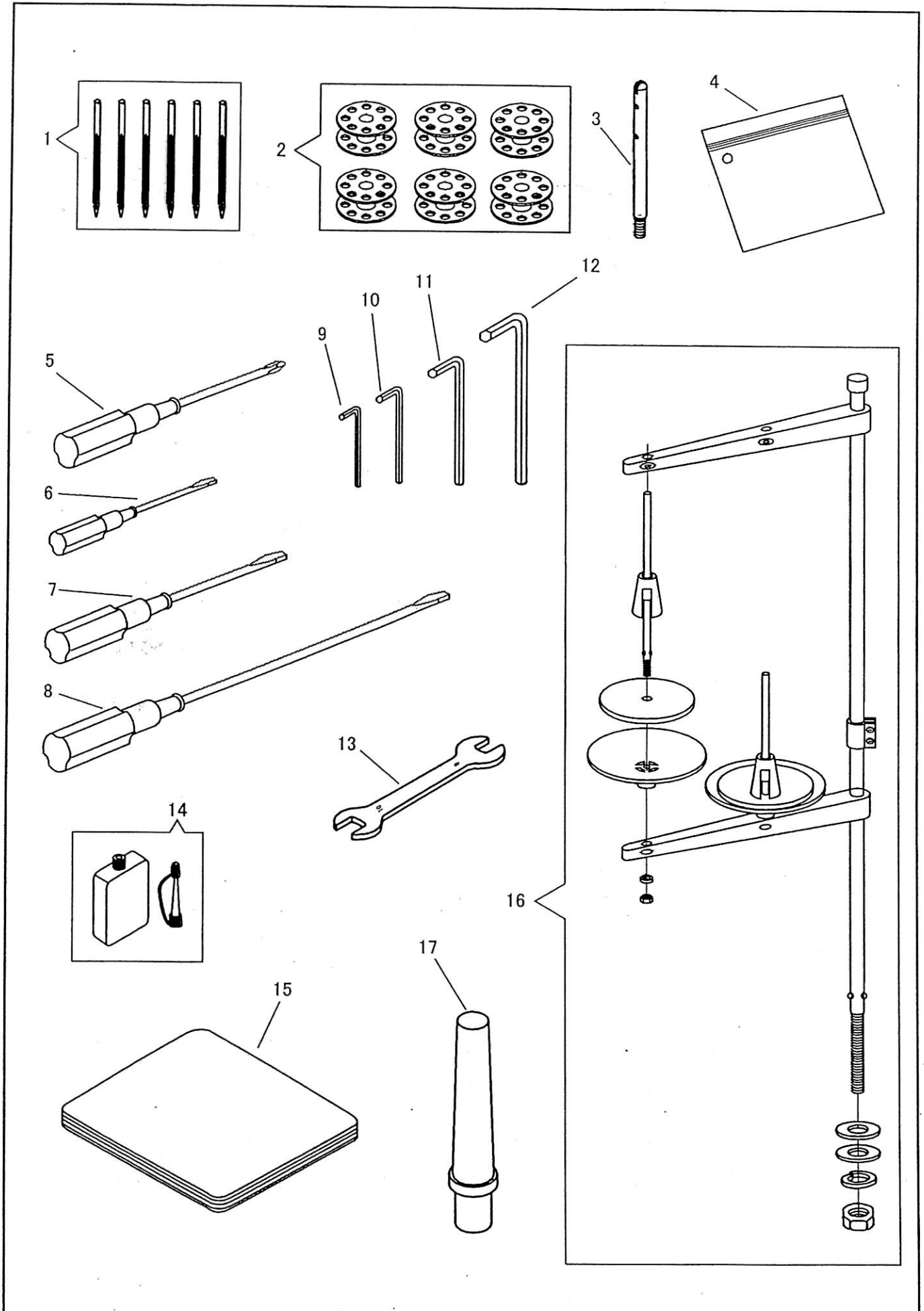
ベルトガード  
BELT GUARD

| No. | 部品番号<br>PARTS NO. | LZ2-990 | LZ2-992 | 個数<br>QTY | 品名                | DESCRIPTION                     |
|-----|-------------------|---------|---------|-----------|-------------------|---------------------------------|
| 1   | 41007             | *       | *       | 1         | ベルトガード(組)         | BELT GUARD COMPLETE             |
| 2   | 41007-01          | *       | *       | 1         | ベルトガード本体          | BELT GUARD BODY                 |
| 3   | 41007-02          | *       | *       | 1         | ベルトガード補助板         | BELT GUARD AUXILIARY PLATE      |
| 4   | 41007-03          | *       | *       | 1         | 補助ベルトガード          | AUXILIARY BELT GUARD            |
| 5   | 21104             | *       | *       | 2         | 本体止めねじ(上)         | SCREW 11/64X40 L=7.5            |
| 6   | 41009             | *       | *       | 2         | 本体止めねじ(下)         | SCREW 15/64X28 L=7.0            |
| 7   | 31092             | *       | *       | 1         | 補助板止めねじ           | SCREW M4X0.7 L=12.0             |
| 8   | 10734-24          | *       | *       | 2         | 補助ベルトガード止木ねじ      | WOOD SCREW                      |
| 9   | 27186             | *       | *       | 2         | 補助ベルトガード止木ねじワッシャー | WASHER                          |
| 10  | 41007C            | *       | *       | 1         | ベルトガード(組、ねじ付)     | BELT GUARD COMPLETE WITH SCREWS |



付属品(1)

ACCESSORIES (1)

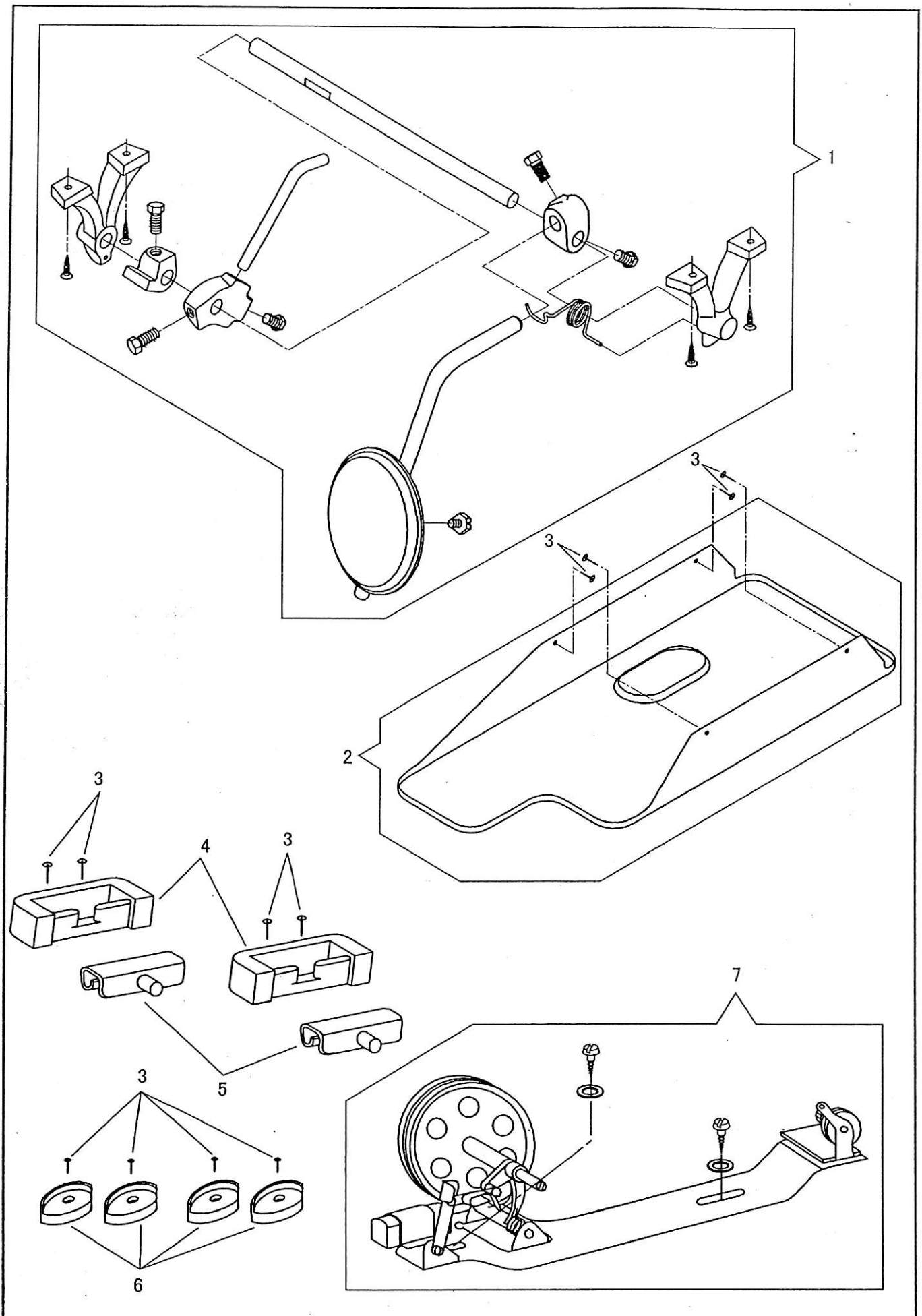


付属品1

ACCESSORIES 1

| No. | 部品番号<br>PARTS NO. | LZ2-990 | LZ2-992 | 個数<br>QTY | 品名             | DESCRIPTION               |
|-----|-------------------|---------|---------|-----------|----------------|---------------------------|
| 1   | N0119             | *       | *       | 6         | 針 DPX17 (#19)  | NEEDLE DPX17 (#19)        |
| 2   | 18034             | *       | *       | 6         | ボビン            | BOBBIN                    |
| 3   | V0231             | *       | *       | 1         | 糸立棒            | ARM SPOOL PIN SCREW       |
| 4   | 8132-A            | *       | *       | 1         | 部品袋            | ACCESSORY BAG             |
| 5   | 19473             | *       | *       | 1         | 十字ドライバー        | SCREW DRIVER (CROSS TYPE) |
| 6   | 8121              | *       | *       | 1         | ドライバー(小)       | SCREW DRIVER (SMALL)      |
| 7   | 8120              | *       | *       | 1         | ドライバー(中)       | SCREW DRIVER (MIDDLE)     |
| 8   | 8118              | *       | *       | 1         | ドライバー(大)       | SCREW DRIVER (LARGE)      |
| 9   | V0232             | *       | *       | 1         | 六角レンチ(2 mm)    | HEXAGONAL WRENCH (2 mm)   |
| 10  | V0233             | *       | *       | 1         | 六角レンチ (2.5 mm) | HEXAGONAL WRENCH (2.5 mm) |
| 11  | V0234             | *       | *       | 1         | 六角レンチ (3 mm)   | HEXAGONAL WRENCH (3 mm)   |
| 12  | V0235             | *       | *       | 1         | 六角レンチ(4 mm)    | HEXAGONAL WRENCH (4 mm)   |
| 13  | V0236             | *       | *       | 1         | スパナ(10X8)      | SPANNER (10X8)            |
| 14  | 8123              | *       | *       | 1         | 油              | OILER                     |
| 15  | 8124              | *       | *       | 1         | ビニールカバー        | VINYL COVER               |
| 16  | V0237             | *       | *       | 1         | 糸立セット          | THREAD STAND COMPLETE     |
| 17  | V0238             | *       | *       | 1         | 頭部受け棒          | HEAD REST                 |

付属品(2)  
ACCESSORIES (2)

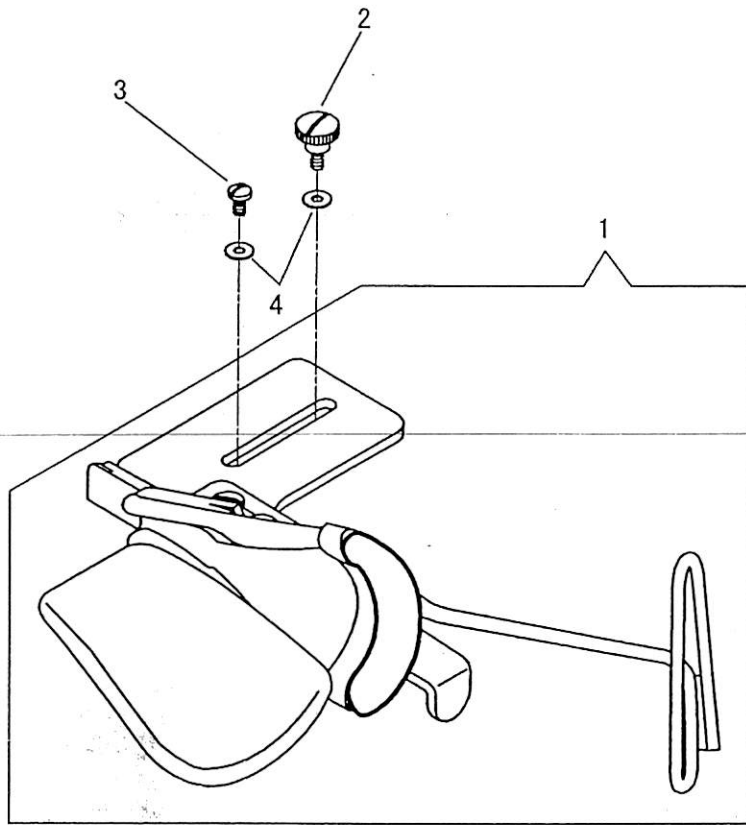


付属品2

ACCESSORIES 2

| No. | 部品番号<br>PARTS NO. | LZ2-990 | LZ2-992 | 個数<br>QTY | 品名      | DESCRIPTION            |
|-----|-------------------|---------|---------|-----------|---------|------------------------|
| 1   | V0241             | *       | *       | 1         | ひざ上げセット | KNEE LIFTER COMPLETE   |
| 2   | V0242             | *       | *       | 1         | 油受      | OIL PAN                |
| 3   | V0243             | *       | *       | 12        | 止釘      | NAIL                   |
| 4   | V0244             | *       | *       | 2         | ヒンジ受ゴム  | HINGE RUBBER CUSHION   |
| 5   | V0245             | *       | *       | 2         | ヒンジ     | HINGE CONNECTION       |
| 6   | V0246             | *       | *       | 4         | コーナーゴム  | CORNER RUBBER CUSHION  |
| 7   | V0248             | *       | *       | 1         | 糸巻きセット  | BOBBIN WINDER COMPLETE |

オプション  
OPTION



オプション

OPTION

| No. | 部品番号<br>PARTS NO. | LZ2-990 | LZ2-992 | 個数<br>QTY | 品名  | DESCRIPTION  |
|-----|-------------------|---------|---------|-----------|---|--|
| 1   | 41005             | *       | *       | 1         | 四つ折バインダー<br>・テープ幅: 30 mm<br>・上がり幅: 8.0 mm | DOUBLE FOLD BIAS BINDER<br>・ Tape size: 30 mm<br>・ Finished size: 8.0 mm |
| 2   | 11830             | *       | *       | 1         | ねじ  | SCREW 9/64X40  |
| 3   | 6333              | *       | *       | 1         | ねじ  | SCREW 9/64X40 L=6.5  |
| 4   | 30025             | *       | *       | 2         | ワッシャー                                     | WASHER   |

## **SEIKO SEWING MACHINE CO., LTD.**

2-13-6 Sakaecho, Funabashi-shi Chiba Prefecture, 273-0018, Japan

TEL: 81-47-420-3561 (Overseas dept.)

FAX: 81-47-420-3560

E-mail: [export@seiko-sewing.co.jp](mailto:export@seiko-sewing.co.jp)

<http://www.seiko-sewing.co.jp/>

Parts No. PB89110(1008)

Rev. 3